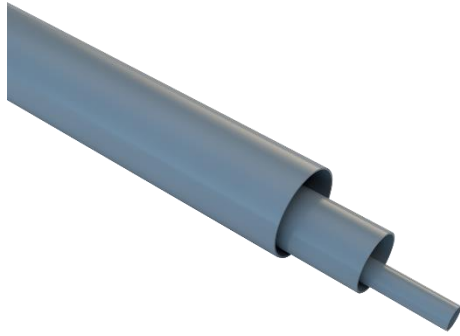


CPVC SCH80 PIPES & FITINGS

CPVC SCH80 PIPE
Colour- Grey

COMPLY WITH ASTM F-441



DIMENSIONS

| SKU | Outside Diameter (mm) | Wall Thickness Minimum + Tolerance (mm) | WEIGHT (kg) | PCS/BUNDLE |
|--------------|-----------------------|---|-------------|------------|
| PIPSCH80C015 | 21.34±0.10 | 3.73+0.51 | 2.00 | 25 |
| PIPSCH80C020 | 26.67±0.10 | 3.91+0.51 | 2.61 | 20 |
| PIPSCH80C025 | 33.40±0.13 | 4.55+0.53 | 3.77 | 10 |
| PIPSCH80C035 | 42.16±0.13 | 4.85+0.58 | 5.39 | 1 |
| PIPSCH80C042 | 48.26±0.15 | 5.08+0.61 | 6.38 | 1 |
| PIPSCH80C050 | 60.32±0.15 | 5.54+0.66 | 8.70 | 1 |
| PIPSCH80C065 | 73.02±0.18 | 7.01+0.84 | 14.04 | 1 |
| PIPSCH80C080 | 88.90±0.20 | 7.62+0.91 | 18.10 | 1 |
| PIPSCH80C100 | 114.30±0.23 | 8.56+1.02 | 26.91 | 1 |
| PIPSCH80C125 | 141.30±0.25 | 9.52+1.14 | 36.17 | 1 |
| PIPSCH80C150 | 168.28±0.28 | 10.97+1.32 | 50.40 | 1 |
| PIPSCH80C200 | 219.08±0.38 | 12.70+1.52 | 78.30 | 1 |