

SEKISUI

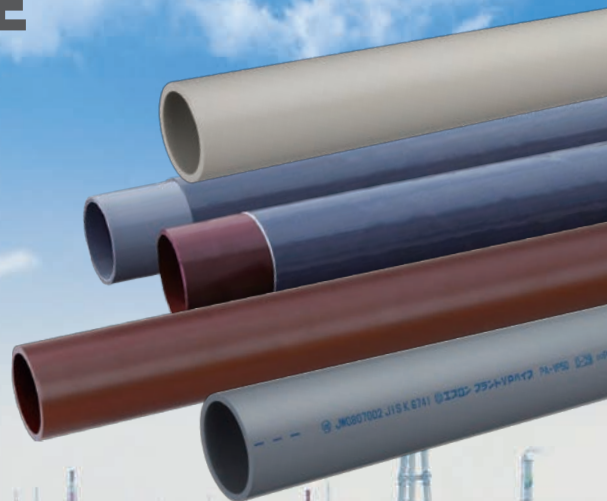
TS/AW (JIS K 6743) FITTINGS



WEBSITE LINK



ESLON™ PLANT PIPE MATERIALS CATALOGUE





JIS Mark Scheme

Certificate of Compliance

Licensee : Yamanashi Sekisui Co., Ltd.

Address : 300 Kamijo Araimachi, Kofu City, Yamanashi Prefecture

Certification Number : JQ0306018

This is to certify that the following product which the above licensee applied for has been complied with the requirements specified in Japanese Industrial Standards (JIS) and relevant Ordinance of industrial products, etc.

Designation of Industrial and Mineral Products for Certification	: Unplasticized poly(vinyl chloride) (PVC-U) pipe fittings for drain Plastic pipes and fittings for water works Plastic pipes and fittings for hot and cold water supply
Division of Certification	: Unplasticized poly(vinyl chloride) (PVC-U) pipes and fittings
JIS Number and name concerning Certification	: (1) JIS K 6739 Unplasticized poly(vinyl chloride) (PVC-U) pipe fittings for drain (2) JIS K 6743 Unplasticized poly(vinyl chloride) (PVC-U) pipe fittings for water supply (3) JIS K 6777 Chlorinated poly(vinyl chloride) (PVC-C) pipe fittings for hot and cold water supply
Type or Grade specified in JIS / Range of Certification	: (1) Unplasticized poly (vinyl chloride) (PVC-U) pipe fittings for drain (2) Unplasticized poly (vinyl chloride) (PVC-U) pipe fittings and Impact-resistant unplasticized poly (vinyl chloride) (PVC-U) pipe fittings (3) Chlorinated poly (vinyl chloride) (PVC-C) pipe fittings

Factory or Business establishments concerning Certification :

Designation and Address : Yamanashi Sekisui Co., Ltd.

300 Kamijo Araimachi, Kofu City, Yamanashi Prefecture

Basis Provision of the Relevant Law concerning Certification :

Clause 1 of Article 30 of the Industrial Standardization Law

Date of the Certification Agreement : December 27, 2006

Date of Expiry : December 26, 2027

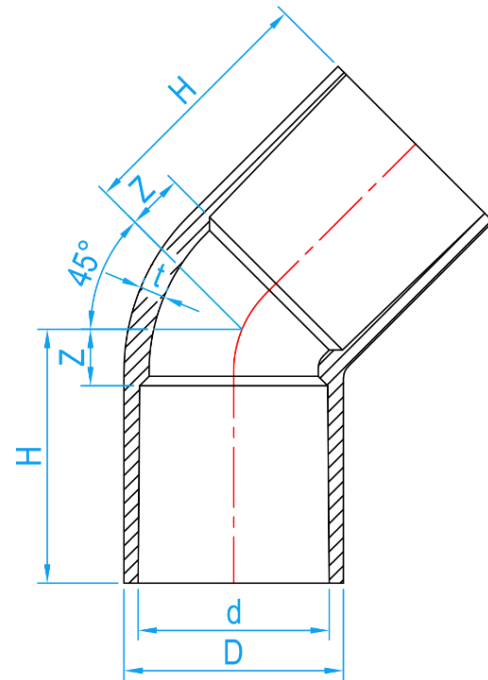
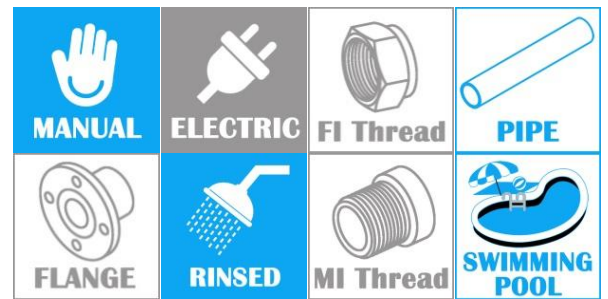
Application Deadline for Periodic Certification Maintenance : June 4, 2027

Surveillance for Renewal of Above Date of Expiry

HIROAKI ISHII
President**JAPAN QUALITY ASSURANCE ORGANIZATION**
1-25, kandasudacho, Chiyoda-ku, Tokyo, Japan

ESLON TS/AW ELBOW 45°

COMPLY WITH JIS K 6743



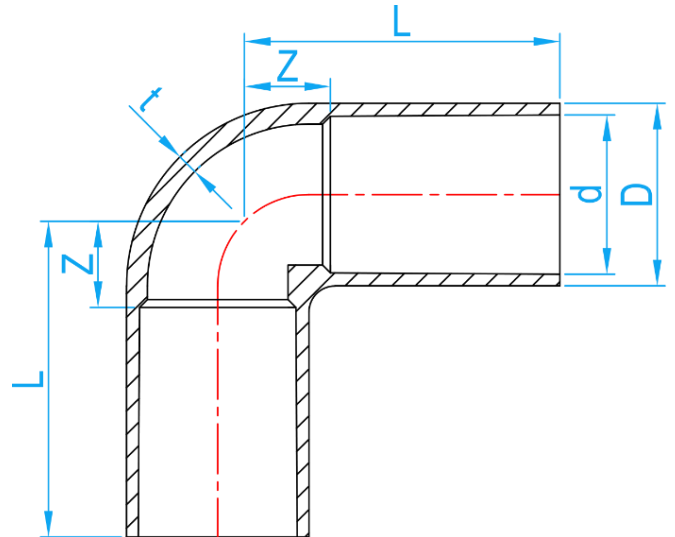
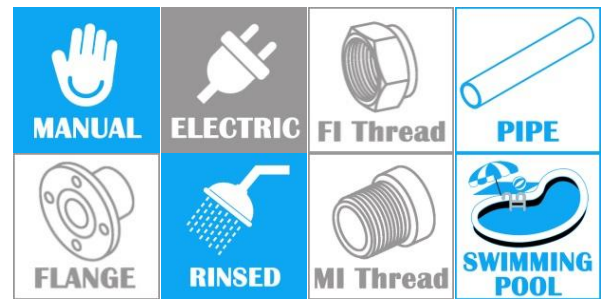
CROSS SECTIONAL VIEW

DIMENSIONS

SKU	DN	D (mm)	d (mm)	H (mm)	t (mm)	Z (mm)	WEIGHT (Kg)	PCS/CTN
AWE45013	13	24.0	18.40±0.20	33	3.0	7	0.018	720
AWE45020	20	33.0	26.45±0.20	44	3.5	9	0.039	260
AWE45025	25	40.0	32.55±0.25	51	4.0	11	0.068	160
AWE45035	35	46.0	38.60±0.25	56	4.0	12	0.084	100
AWE45042	42	57.0	48.70±0.30	69	4.5	14	0.142	60
AWE45050	50	70.0	60.80±0.30	81	5.0	18	0.245	30
AWE45065	65	87.0	76.60±0.30	94	6.6	33	0.515	24
AWE45080	80	102.0	89.60±0.30	98	8.0	34	0.660	12
AWE45100	100	130.0	114.70±0.30	123	10.0	39	1.262	6
AWE45125	125	160.0	140.85±0.35	149	11.0	44	1.970	6
AWE45150	150	190.0	166.00±0.40	184	13.0	51	3.445	2
AWE45200	200	243.0	217.40±0.70	205	13.0	60	5.600	2
AWE45250	250	300.0	268.60±0.70	254	14.5	79	9.000	1
AWE45300	300	356.0	319.80±0.80	280	16.0	95	13.600	1

Notes: 1. The tolerance for H is +5 and -1mm.

2. The tolerance for D and t depends on the common dimensions of socket.



CROSS SECTIONAL VIEW

DIMENSIONS

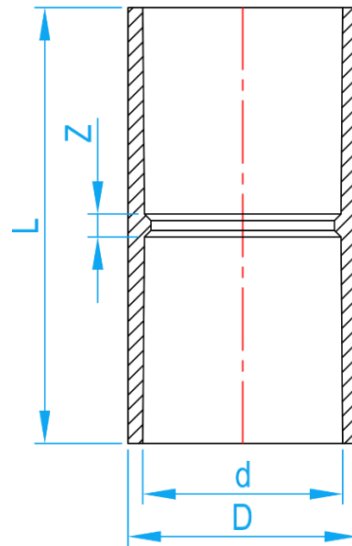
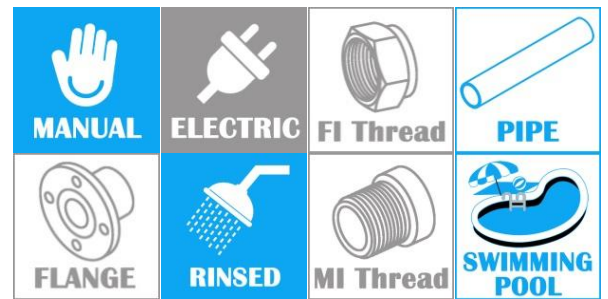
SKU	DN	D (mm)	d (mm)	H (mm)	t (mm)	Z (mm)	WEIGHT (Kg)	PCS/CTN
AWE90013	13	24	18.40±0.20	36	3.0	10	0.022	680
AWE90015	15	29	22.40±0.20	43	3.5	13	0.036	400
AWE90020	20	33	26.45±0.20	50	3.5	15	0.050	240
AWE90025	25	40	32.55±0.25	58	4.0	18	0.076	140
AWE90035	35	46	38.60±0.25	65	4.0	21	0.105	100
AWE90042	42	57	48.70±0.30	82	4.5	27	0.201	60
AWE90050	50	70	60.80±0.30	96	5.0	33	0.309	30
AWE90065	65	87	76.60±0.30	110	6.6	49	0.536	20
AWE90080	80	106	89.60±0.30	120	8.0	56	0.803	15
AWE90100	100	134	114.70±0.30	155	10.0	71	1.653	7
AWE90125	125	157	140.85±0.35	187	11.0	83	2.760	5
AWE90150	150	189	166.00±0.40	230	13.0	98	4.584	3
AWE90200	200	243	217.40±0.70	261.5	13.0	116.5	6.600	3
AWE90250	250	300	268.60±0.70	317.8	14.5	142.8	10.800	2
AWE90300	300	356	319.80±0.80	355.0	16.0	170.0	15.500	1

Notes: 1. The tolerance for H is +5 and -1mm.

2. The tolerance for D and t depends on the common dimensions of socket.

ESLON TS/AW EQUAL SOCKET

COMPLY WITH JIS K 6743



CROSS SECTIONAL VIEW

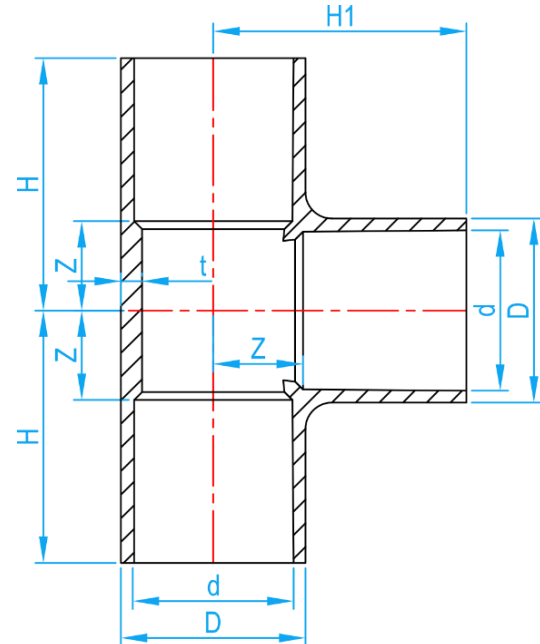
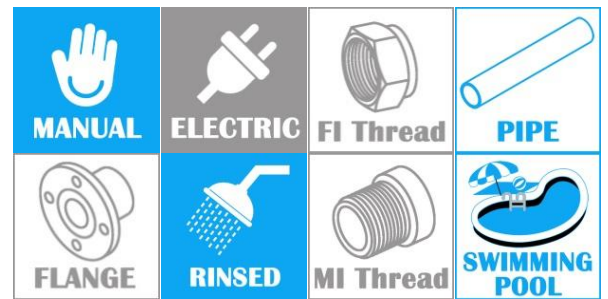
DIMENSIONS

SKU	DN	D (mm)	d (mm)	L (mm)	Z (mm)	WEIGHT (Kg)	PCS/CTN
AWES013	13	24	18.40±0.20	57	5	0.018	840
AWES015	15	29	22.40±0.20	67	7	0.028	520
AWES020	20	33	26.45±0.20	77	7	0.040	340
AWES025	25	40	32.55±0.25	87	7	0.061	200
AWES035	35	46	38.60±0.25	95	7	0.078	140
AWES042	42	57	48.70±0.30	117	7	0.142	80
AWES050	50	70	60.80±0.30	133	7	0.210	48
AWES065	65	87	76.60±0.30	145	23	0.366	30
AWES080	80	102	89.60±0.30	155	27	0.515	22
AWES100	100	130	114.70±0.30	200	32	1.077	10
AWES125	125	157	140.85±0.35	240	32	1.715	8
AWES150	150	186	166.00±0.40	300	36	2.846	4
AWES200	200	243	217.40±0.70	300	10	3.400	4
AWES250	250	300	268.60±0.70	384	34	6.900	1
AWES300	300	356	319.80±0.80	408	38	9.100	1

Notes: 1. The tolerance for L is ± 4 mm.
2. The tolerance for D depends on the common dimensions of socket.

ESLON TS/AW EQUAL TEE

COMPLY WITH JIS K 6743



CROSS SECTIONAL VIEW

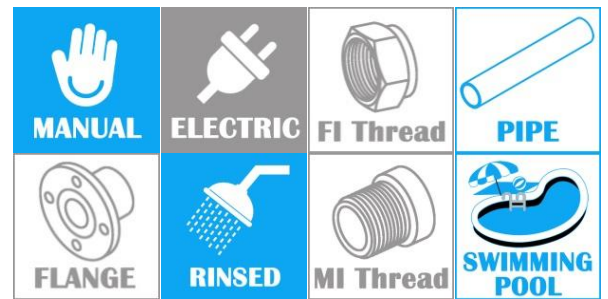
DIMENSIONS

SKU	D (mm)	d (mm)	t (mm)	H (mm)	H1 (mm)	Z (mm)	WEIGHT (Kg)	PCS/CTN
AWET013	24	18.40±0.20	3.0	36	36	10	0.030	440
AWET015	29	22.40±0.20	3.5	43	43	13	0.050	240
AWET020	33	26.45±0.20	3.5	50	50	15	0.070	160
AWET025	40	32.55±0.25	4.0	58	58	18	0.119	80
AWET035	46	38.60±0.25	4.0	65	65	21	0.145	60
AWET042	57	48.70±0.30	4.5	82	82	27	0.276	30
AWET050	70	60.80±0.30	5.0	96	96	33	0.443	20
AWET065	87	76.60±0.30	6.6	110	110	49	0.769	14
AWET080	102	89.60±0.30	8.0	120	120	56	1.158	10
AWET100	130	114.70±0.30	10.0	152	152	68	2.254	4
AWET125	157	140.85±0.35	11.0	187	187	83	3.980	3
AWET150	186	166.00±0.40	13.0	230	230	98	6.365	2
AWET200	243	217.40±0.70	13.0	267	267	122	8.200	1
AWET250	300	268.60±0.70	14.5	355	355	180	18.800	1
AWET300	356	319.80±0.80	16.0	410	375	225	30.400	1

Notes: 1. The tolerance for H is +5 and -1mm.

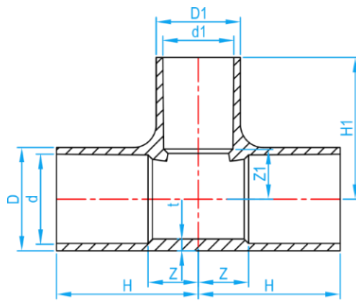
2. The tolerance for D, D1 and t depends on the common dimensions of socket.

3. R is more than 10mm.

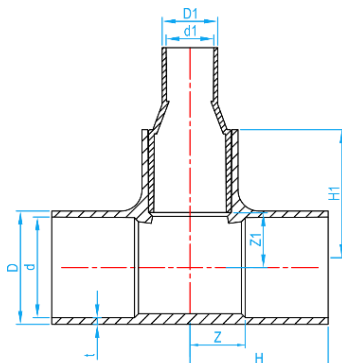


DIMENSIONS

SKU	D (mm)	d (mm)	D1 (mm)	d1 (mm)	t (mm)	H (mm)	H1 (mm)	Z (mm)	Z1 (mm)	WEIGHT (Kg)	PCS/ CTN
AWRT01513	29	22.40±0.20	24	18.40±0.20	3.5	41	38	11	12	0.045	320
AWRT02013	33	26.45±0.20	24	18.40±0.20	3.5	46	40	11	14	0.059	200
AWRT02015	33	26.45±0.20	29	22.40±0.20	3.5	48	45	13	15	0.059	200
AWRT02513	40	32.55±0.25	24	18.40±0.20	4.0	51	43	11	17	0.078	140
AWRT02515	40	32.55±0.25	29	22.40±0.20	4.0	53	48	13	18	0.086	120
AWRT02520	40	32.55±0.25	33	26.45±0.20	4.0	55	53	15	18	0.091	100
AWRT03513	46	38.60±0.25	24	18.40±0.20	4.0	55	46	11	20	0.099	100
AWRT03515	46	38.60±0.25	29	22.40±0.20	4.0	57	51	13	21	0.103	80
AWRT03520	46	38.60±0.25	33	26.45±0.20	4.0	59	56	15	21	0.111	80
AWRT03525	46	38.60±0.25	40	32.55±0.25	4.0	62	61	18	21	0.132	72
AWRT04213	57	48.70±0.30	24	18.40±0.20	4.5	66	52	11	26	0.152	60
AWRT04215	57	48.70±0.30	29	22.40±0.20	4.5	68	57	13	27	0.173	56
AWRT04220	57	48.70±0.30	33	26.45±0.20	4.5	70	62	15	27	0.182	50
AWRT04225	57	48.70±0.30	40	32.55±0.25	4.5	73	67	18	27	0.208	46
AWRT04235	57	48.70±0.30	46	38.60±0.25	4.5	76	71	21	27	0.200	46
AWRT05013	70	60.80±0.30	24	18.40±0.20	5.0	74	58	11	32	0.227	40
AWRT05015	70	60.80±0.30	29	22.40±0.20	5.0	76	63	13	33	0.258	34
AWRT05020	70	60.80±0.30	33	26.45±0.20	5.0	78	68	15	33	0.280	34
AWRT05025	70	60.80±0.30	40	32.55±0.25	5.0	81	73	18	33	0.283	30
AWRT05035	70	60.80±0.30	46	38.60±0.25	5.0	84	77	21	33	0.297	26
AWRT05042	70	60.80±0.30	57	48.70±0.30	5.0	90	88	27	33	0.345	22
AWRT06550	87	76.60±0.30	70	60.80±0.30	6.6	101	104	40	41	0.616	18
AWRT08025	102	89.60±0.30	40	32.55±0.25	8.0	93	88	29	48	0.670	18
AWRT08042	102	89.60±0.30	57	48.70±0.30	8.0	100	102	36	47	0.816	14
AWRT08050	102	89.60±0.30	70	60.80±0.30	8.0	105	110	41	47	0.907	12
AWRT08065	102	89.60±0.30	87	76.60±0.30	8.0	113	117	49	56	1.012	10
AWRT10050	130	114.70±0.30	70	60.80±0.30	10.0	125	122	41	59	1.486	6
AWRT10080	130	114.70±0.30	102	89.60±0.30	10.0	140	132	56	68	1.818	5
AWRT125100	157	140.85±0.35	130	114.70±0.30	11.0	173	167	69	83	3.317	3
AWRT15080	186	166.00±0.40	102	89.60±0.30	13.0	195	158	63	94	4.246	2
AWRT150100	186	166.00±0.40	130	114.70±0.30	13.0	208	182	76	98	4.954	2
AWRT150125	186	166.00±0.40	157	140.85±0.35	13.0	217	201	85	97	5.125	2
AWRT200100	243	217.40±0.70	134	114.70±0.30	13.0	218	200	73	116	6.500	1
AWRT200150	243	217.40±0.70	189	166.00±0.40	13.0	245	257	100	125	8.400	1
*AWRT250150	300	268.60±0.70	189	166.00±0.40	14.5	355	524	180	392	8.400	1
AWRT250200	300	268.60±0.70	243	217.40±0.70	14.5	335	335	160	190	16.100	1
*AWRT300150	356	319.80±0.80	189	166.00±0.40	16.0	375	561	190	429	30.800	1
*AWRT300200	356	319.80±0.80	243	217.40±0.70	16.0	410	599	225	454	37.700	1
AWRT300250	356	319.80±0.80	300	268.60±0.70	16.0	375	392	190	217	25.500	1

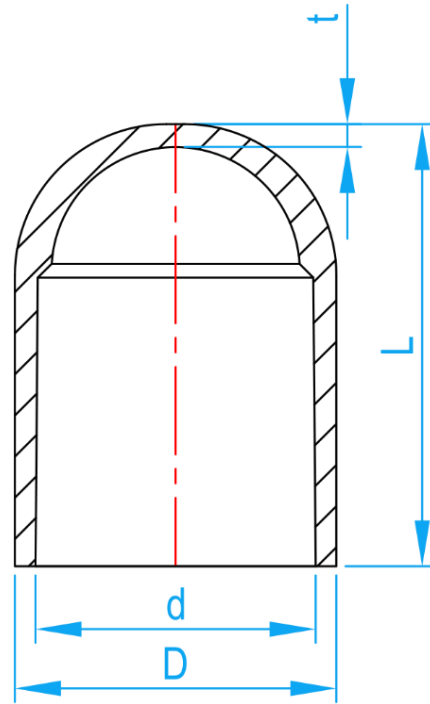
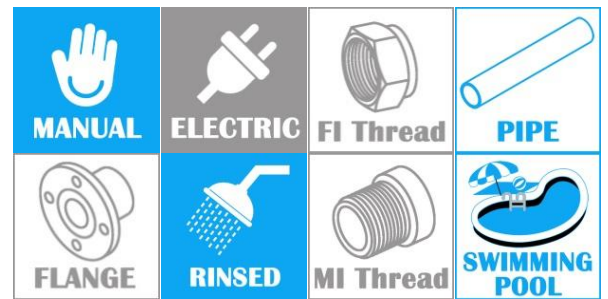


CROSS SECTIONAL VIEW



*WITH BUSHING
CROSS SECTIONAL VIEW

- Notes:**
1. The tolerance for H is +5 and -1mm.
 2. The tolerance for D, D1 and t depends on the common dimensions of socket.
 3. R is more than 10mm.



CROSS SECTIONAL VIEW

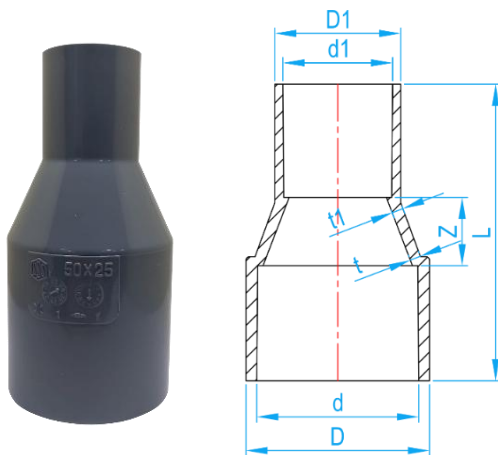
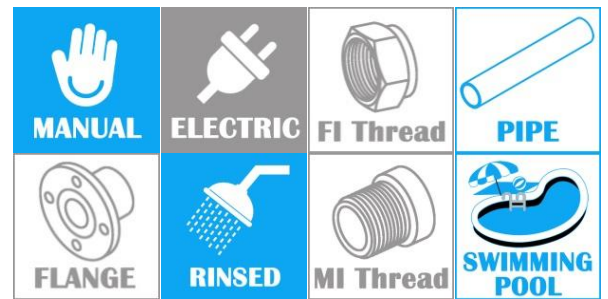
DIMENSIONS

SKU	DN	D (mm)	d (mm)	t (mm)	L (mm)	WEIGHT (Kg)	PCS/CTN
AWEC013	13	24	18.40 ± 0.20	3.0	36.5	0.011	740
AWEC015	15	29	22.40 ± 0.20	3.5	43.0	0.017	480
AWEC020	20	33	26.45 ± 0.20	3.5	50.0	0.025	320
AWEC025	25	40	32.55 ± 0.25	4.0	58.5	0.039	320
AWEC035	35	46	38.60 ± 0.25	4.0	65.5	0.053	220
AWEC042	42	57	48.70 ± 0.30	4.5	82.0	0.091	120
AWEC050	50	70	60.80 ± 0.30	5.0	96.5	0.146	70
AWEC080	80	102	76.60 ± 0.30	8.0	105.0	0.442	36
AWEC100	100	130	89.60 ± 0.30	10.0	138.0	0.775	18
AWEC150	150	186	114.70 ± 0.30	13.0	205.0	1.745	6

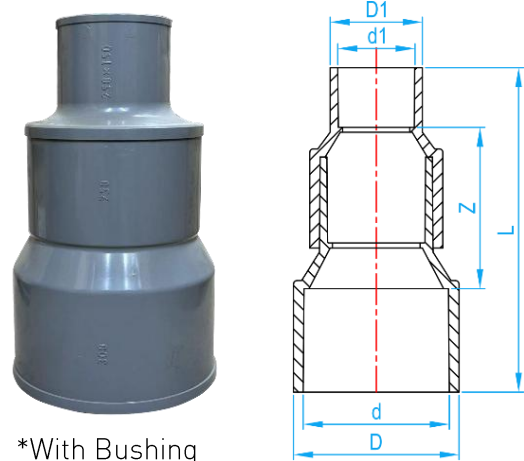
- Notes:**
1. The tolerance for L is +5 and 0 mm.
 2. R is 1~ 5mm.
 3. The tolerance for D and t depends on the common dimensions of socket.

VU/AW REDUCE SOCKET

COMPLY WITH JIS K 6743



CROSS SECTIONAL VIEW



*With Bushing

DIMENSIONS

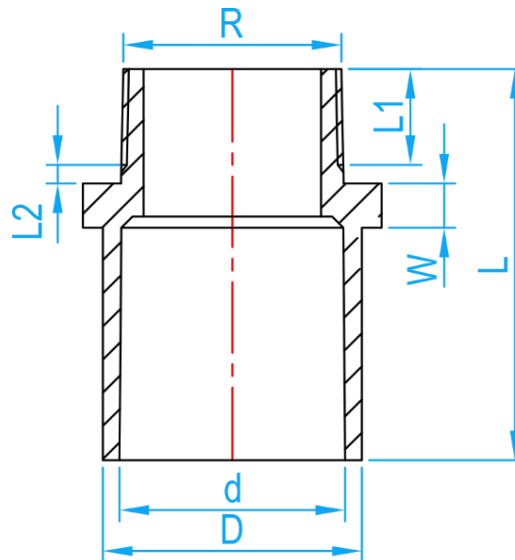
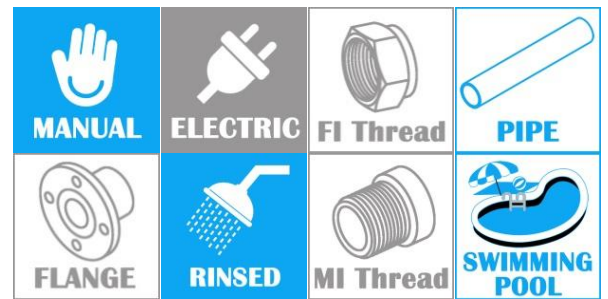
SKU	D (mm)	d (mm)	D1 (mm)	d1 (mm)	L (mm)	Z (mm)	t (mm)	t1 (mm)	WEIGHT (Kg)	PCS/CTN
AWRS01513	29	22.40±0.20	24	18.40±0.20	61	5	3.5	3.0	0.024	640
AWRS02013	33	26.45±0.20	24	18.40±0.20	68	7	3.5	3.0	0.031	480
AWRS02015	33	26.45±0.20	29	22.40±0.20	71	6	3.5	3.5	0.036	400
AWRS02513	40	32.55±0.25	24	18.40±0.20	86	20	4.0	3.0	0.046	280
AWRS02515	40	32.55±0.25	29	22.40±0.20	85	15	4.0	3.5	0.048	260
AWRS02520	40	32.55±0.25	33	26.45±0.20	84	9	4.0	3.5	0.053	240
AWRS03513	46	38.60±0.25	24	18.40±0.20	95	25	4.0	3.0	0.058	200
AWRS03520	46	38.60±0.25	33	26.45±0.20	93	14	4.0	3.5	0.060	160
AWRS03525	46	38.60±0.25	40	32.55±0.25	93	9	4.0	4.0	0.071	160
AWRS04220	57	48.70±0.30	33	26.45±0.20	113	23	4.5	3.5	0.095	100
AWRS04225	57	48.70±0.30	40	32.55±0.25	114	19	4.5	4.0	0.110	100
AWRS04235	57	48.70±0.30	46	38.60±0.25	114	15	4.5	4.0	0.118	90
AWRS05020	70	48.70±0.30	33	26.45±0.20	116	18	6.5	6.5	0.180	-
AWRS05025	70	60.80±0.30	40	32.55±0.25	140	37	5.0	4.0	0.180	50
AWRS05035	70	60.80±0.30	46	38.60±0.25	136	29	5.0	4.0	0.167	50
AWRS05042	70	60.80±0.30	57	48.70±0.30	136	18	5.0	4.5	0.185	50
AWRS06550	87	76.60±0.30	70	60.80±0.30	149	25	6.6	5.0	0.336	40
AWRS08050	102	89.60±0.30	70	60.80±0.30	165	38	8.0	5.0	0.450	30
AWRS08065	102	89.60±0.30	87	76.60±0.30	159	34	8.0	6.6	0.487	30
AWRS10080	130	114.70±0.30	102	89.60±0.30	190	42	10.0	8.0	0.890	15
AWRS125100	157	140.85±0.35	130	114.70±0.30	229	41	11.0	10.0	1.531	12
AWRS150100	186	166.00±0.40	130	114.70±0.30	295	79	13.0	10.0	2.348	4
AWRS150125	186	166.00±0.40	157	140.85±0.35	272	36	13.0	11.0	2.369	4
AWRS200150	243	217.40±0.70	189	166.00±0.40	368	91	13.0	13.0	3.900	2
*AWRS250150	300	268.60±0.70	189	166.00±0.40	557	250	14.5	-	3.900	1
AWRS250200	300	268.60±0.70	243	217.40±0.70	400	80	14.5	14.5	12.100	1
*AWRS300150	356	319.80±0.80	189	166.00±0.40	605	288	16.0	-	15.100	1
*AWRS300200	356	319.80±0.80	243	217.40±0.70	601	271	16.0	-	16.400	1
AWRS300250	356	319.80±0.80	300	268.60±0.70	435	75	16.0	16.0	9.100	1

Notes: 1. The tolerance for L is ±4mm.

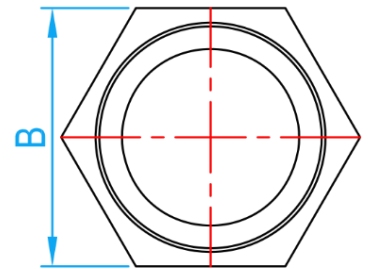
* With Bushing

ESLON TS/AW VALVE SOCKET

COMPLY WITH JIS K 6743



CROSS SECTIONAL VIEW



TOP VIEW

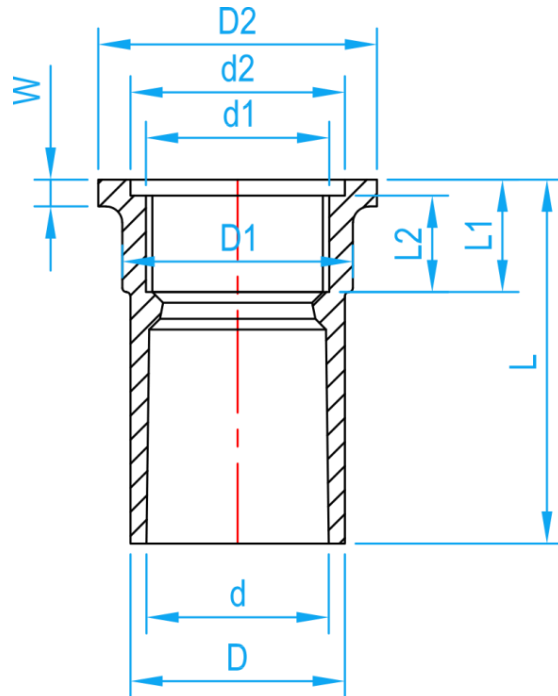
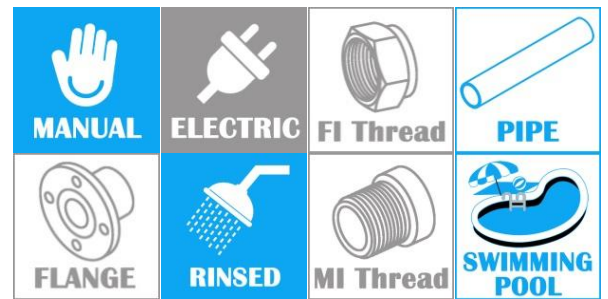
DIMENSIONS

SKU	DN	D (mm)	d (mm)	Threaded Section						L2 (mm)	W (mm)	L (mm)	B (mm)	WEIGHT (Kg)	PCS/CTN
				Size (inch)	D1 (mm)	No. of Screw Threads (per 25.4mm)	a (mm)	Tolerance for [a]	L1 (mm)						
AWVS013	13	24	18.40±0.20	R ½"	20.955	14	8.16	±1.81	15	3.5	6	50	24	0.008	1000
AWVS015	15	29	22.40±0.20	R ½"	20.955	14	8.16	±1.81	15	3.5	6	54	29	0.023	360
AWVS020	20	33	26.45±0.20	R ¾"	26.441	14	9.53	±1.81	17	3.5	8	64	33	0.033	220
AWVS025	25	40	32.55±0.25	R 1"	33.249	11	10.39	±2.31	19	4.0	8	71	40	0.053	240
AWVS035	35	46	38.60±0.25	R 1 ¼"	41.910	11	12.70	±2.31	22	4.0	10	80	46	0.070	160
AWVS042	42	57	48.70±0.30	R 1 ½"	47.803	11	12.70	±2.31	22	5.0	10	92	57	0.109	100
AWVS050	50	70	60.80±0.30	R 2"	59.614	11	15.88	±2.31	26	5.0	12	106	70	0.098	60
AWVS065	65	87	76.60±0.30	R 2 ½"	75.814	11	17.50	±6.9	30	6.0	14	119	91	0.268	60
AWVS080	80	102	89.60±0.30	R 3"	87.884	11	20.60	±6.9	34	6.0	16	128	108	0.414	36
AWVS100	100	130	114.70±0.30	R 4"	113.030	11	25.40	±6.9	40	7.0	18	157	135	0.766	18

- Notes:**
1. The threaded section conforms to the JIS B 0203 (pipe taper thread) taper thread.
 2. The tolerance for L is +5 and -2mm.
 3. The nut section is octagonal for 30 mm or more.
 4. The tolerance for D depends on the common dimensions of socket.

ESLON TS/AW FAUCET SOCKET

COMPLY WITH JIS K 6743

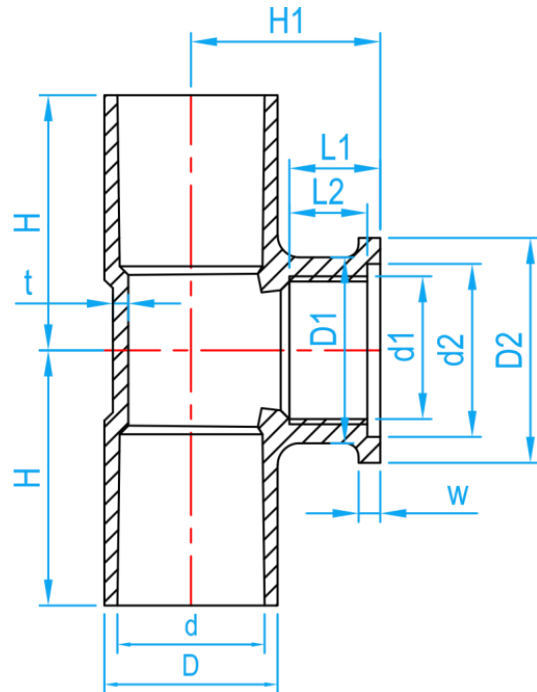
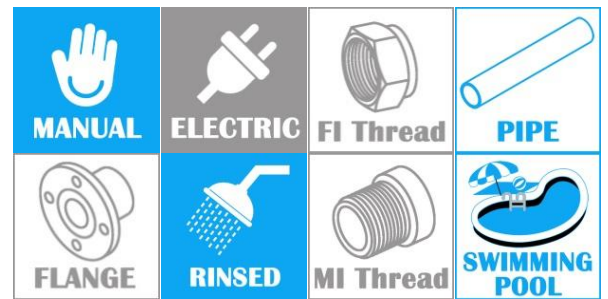


CROSS SECTIONAL VIEW

DIMENSIONS

SKU	DN	D (mm)	d (mm)	D1 (mm)	L1 (mm)	L2 (mm)	Threaded Section		d2 (mm)	D2 (mm)	W (mm)	L (mm)	WEIGHT (Kg)	PCS/CTN
							d1 (inch)	No. of Screw Threads (per 25.4mm)						
AWFS013	13	24	18.40±0.20	30	17	14	RP 1/2"	14	26	34	4	47	0.021	800
AWFS015	15	29	22.40±0.20	30	17	14	RP 1/2"	14	26	34	4	52	0.023	600
AWFS020	20	33	26.45±0.20	37	19	16	RP 3/4"	14	32	42	4	59	0.036	360
AWFS025	25	40	32.55±0.25	46	21	18	RP 1"	11	40	52	5	68	0.060	200

- Notes:**
1. The threaded section of JIS B 0203 (pipe taper thread) is the parallel female thread.
 2. The tolerance for L2 is ± 1 mm. The tolerance for L is +5 and -1mm.
 3. The tolerance for D depends on the common dimensions of socket.



CROSS SECTIONAL VIEW

DIMENSIONS

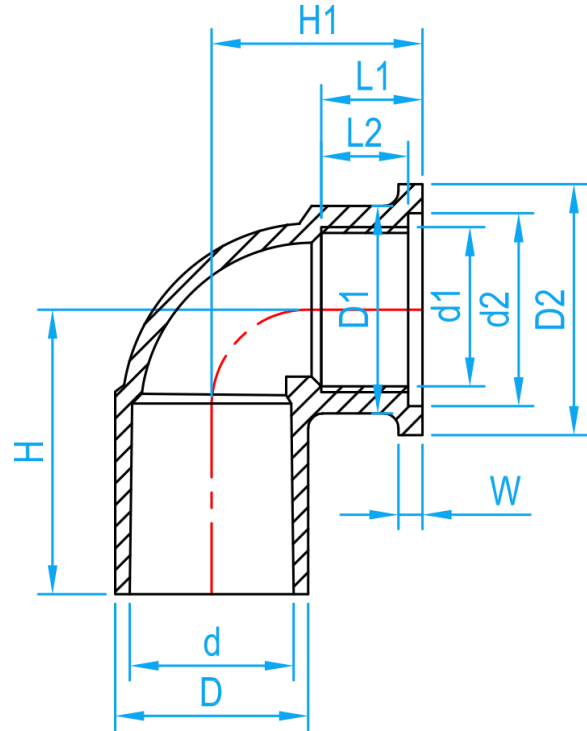
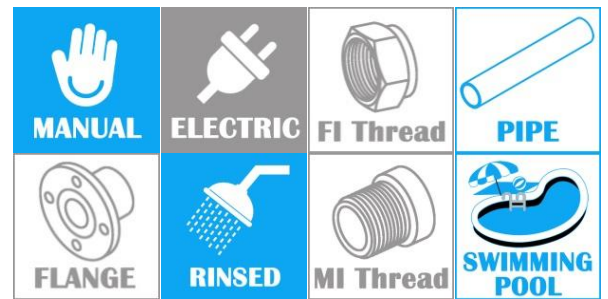
SKU	DN	D (mm)	d (mm)	D1 (mm)	L1 (mm)	L2 (mm)	Threaded Section		d2 (mm)	D2 (mm)	H (mm)	H1 (mm)	W (mm)	t (mm)	WEIGHT (Kg)	PCS/CTN
							d1 (inch)	No. of Screw Threads (per 25.4mm)								
AWFT013	13	24	18.40±0.20	28	17	14	RP 1/2"	14	26	34	38	29	4	3.0	0.038	400
AWFT01513	15x13	29	22.40±0.20	28	17	14	RP 1/2"	14	26	34	43	32	4	3.5	0.045	260
AWFT02013	20x13	33	26.45±0.20	29	17	14	RP 1/2"	14	32	42	47	34	4	3.0	0.060	200
AWFT020	20	33	26.45±0.20	35	19	16	RP 3/4"	14	32	42	51	36	4	3.5	0.06	160
AWFT025	25	40	32.55±0.25	46	21	18	RP 1"	11	40	52	59	42	5	4.0	0.125	80

Notes:

1. The threaded section of JIS B 0203 (pipe taper thread) is the parallel female thread.
2. The tolerance for L2 is ± 1 mm. The tolerance for H is +5 and -1mm. The tolerance for H1 is +5 and -2mm.
3. The tolerance for D depends on the common dimensions of socket.

ESLON TS/AW FAUCET ELBOW

COMPLY WITH JIS K 6743



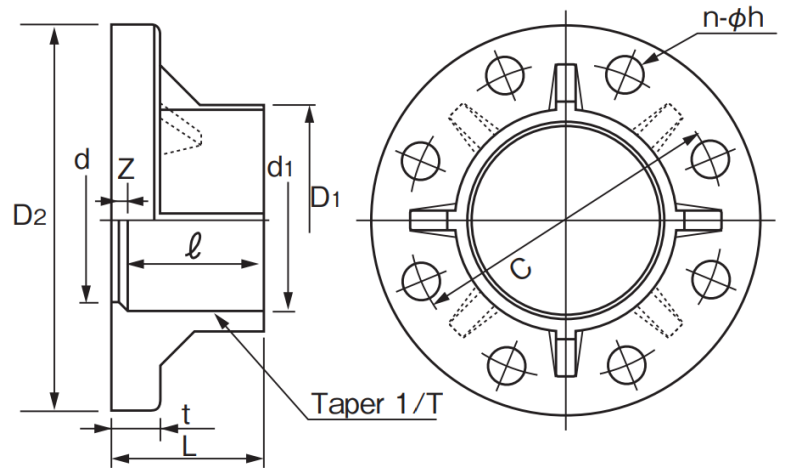
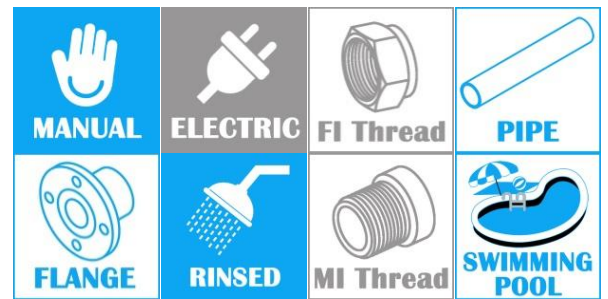
CROSS SECTIONAL VIEW

DIMENSIONS

SKU	DN	D (mm)	d (mm)	D1 (mm)	L1 (mm)	L2 (mm)	Threaded Section		d2 (mm)	D2 (mm)	H (mm)	H1 (mm)	W (mm)	t (mm)	WEIGHT (Kg)	PCS/CTN
							d1 (inch)	No. of Screw Threads (per 25.4mm)								
AWFE013	13	24	18.40±0.20	28	17	14	RP ½"	14	26	34	38	29	4	3.0	0.042	600
AWFE015	15	29	22.40±0.20	29	17	14	RP ½"	14	26	34	38	32	4	3.5	0.034	440
AWFE020	20	33	26.45±0.20	35	19	16	RP ¾"	14	32	42	51	36	4	3.5	0.054	280
AWFE025	25	40	32.55±0.25	43	21	18	RP 1"	11	40	52	59	40	5	4.0	0.088	160

Notes:

- 1.The threaded section of JIS B 0203 (pipe taper thread) is the parallel female thread.
- 2.The tolerance for L2 is ± 1 mm. The tolerance for H is +5 and -1mm. The tolerance for H1 is +5 and -2mm.
- 3.The tolerance for D depends on the common dimensions of socket.



CROSS SECTIONAL VIEW

DIMENSIONS

SKU	SIZE		TS Socket			L	Z	d	Flange						WEIGHT (Kg)	PCS/ CTN
	A	B	d1	e	1/T				C	D2	t	n-Øh	Applicable Bolt			
													M	Length		
AWFLS013	13	3/8	18.4	26	1/30	31	5	14	65	90	14	4-15	M12	50	0.12	45
AWFLS015	15	1/2	22.4	30	1/34	35	5	17	70	95	14	4-15	M12	50	0.13	45
AWFLS020	20	3/4	26.5	35	1/34	40	5	21	75	100	14	4-19	M12	50	0.15	45
AWFLS025	25	1	32.6	40	1/34	45	5	25	90	125	14	4-19	M16	55	0.24	30
AWFLS035	32	1 1/4	38.6	44	1/34	50	6	31	100	135	16	4-19	M16	60	0.31	30
AWFLS042	40	1 1/2	48.7	55	1/37	61	6	41	105	140	16	4-19	M16	60	0.36	30
AWFLS050	50	2	60.8	63	1/37	70	7	52	120	155	20	4-19	M16	70	0.52	16
AWFLS065	65	2 1/2	76.6	61	1/48	70	9	67	140	175	22	4-19	M16	75	0.71	10
AWFLS080	80	3	89.6	64	1/49	72	8	78	150	185	22	8-19	M16	75	0.85	10
AWFLS100	100	4	114.7	84	1/56	90	6	100	175	210	22	8-19	M16	75	1.14	10
AWFLS125	125	5	140.9	104	1/58	114	10	125	210	250	24	8-23	M20	80	1.67	10
AWFLS150	150	6	166.0	132	1/63	142	10	146	240	280	26	8-23	M20	85	2.53	6
AWFLS200	200	8	217.5	155	1/50	166	11	196	290	330	28	12-23	M20	90	3.62	4
AWFLS250	250	10	268.8	185	1/50	198	13	247	355	400	30	12-25	M22	95	5.48	3
AWFLS300	300	12	319.0	185	1/57	203	18	298	400	445	32	16-25	M22	100	7.80	1

Notes: 1. Flange dimensions conform to JWWA B2220.

2. Usable maximum temperature is 80° C.