

Drain Cleaning Machine



Table of Contents

Recording Form for Machine Serial Number	1
Safety Symbols	2
General Power Tool Safety Warnings	
Work Area Safety	2
Electrical Safety	2
Personal Safety.....	3
Power Tool Use and Care	3
Service.....	4
Specific Safety Information	
Transportable Drain Cleaner Safety Warnings.....	4
Description, Specifications and Standard Equipment	
Description	5
Specifications	5
Standard Equipment	6
Machine Assembly	
Installing Wheels.....	6
Mounting AUTOFEED® Cable Feed (Optional Equipment)	6
Attaching Front Guide Hose (Optional Equipment).....	7
Pre-Operation Inspection	7
Machine and Work Area Set Up	9
Operating Instructions	
Operation	12
Feeding the Cable into the Drain	12
Passing Through Traps or Other Transitions	13
Cleaning the Drain	13
43	
Handling a Stuck Tool	14
Freeing a Stuck Tool	14
Retrieving the Cable	14
Using Machine with a Front Guide Hose	15
Maintenance Instructions	
Cleaning.....	15
Cables.....	16
AUTOFEED Cable Feed	16
Lubrication	16
Front Guide Hose.....	16
Belt Removal/Installation	16
Torque Limiter Adjustment	16
Replacing Cable.....	17
Optional Equipment	17
Machine Storage	17
Service and Repair	17
Disposal	18
Troubleshooting	19
EC Declaration of Conformity	Inside Back Cover
Lifetime Warranty	Back Cover

*Original Instructions - English

K-400

Drain Cleaning Machine



⚠ WARNING!

Read this Operator's Manual carefully before using this tool. Failure to understand and follow the contents of this manual may result in electrical shock, fire and/or serious personal injury.

K-400 Drain Cleaning Machine

Record Serial Number below and retain product serial number which is located on nameplate.

Serial
No.

--	--

Safety Symbols

In this operator's manual and on the product, safety symbols and signal words are used to communicate important safety information. This section is provided to improve understanding of these signal words and symbols.



This is the safety alert symbol. It is used to alert you to potential personal injury hazards. Obey all safety messages that follow this symbol to avoid possible injury or death.



DANGER indicates a hazardous situation which, if not avoided, will result in death or serious injury.



WARNING indicates a hazardous situation which, if not avoided, could result in death or serious injury.



CAUTION indicates a hazardous situation which, if not avoided, could result in minor or moderate injury.



NOTICE indicates information that relates to the protection of property.



This symbol means read the operator's manual carefully before using the equipment. The operator's manual contains important information on the safe and proper operation of the equipment.



This symbol means always wear safety glasses with side shields or goggles when handling or using this equipment to reduce the risk of eye injury.



This symbol indicates the risk of hands, fingers or other body parts being caught, wrapped or crushed in the drain cleaning cable.



This symbol indicates the risk of electrical shock.



This symbol indicates the risk of entanglement in a belt and pulley.

General Power Tool Safety Warnings*

WARNING

Read all safety warnings, instructions, illustrations and specifications provided with this power tool. Failure to follow all instructions listed below may result in electric shock, fire and/or serious injury.

SAVE ALL WARNINGS AND INSTRUCTIONS FOR FUTURE REFERENCE!

The term "power tool" in the warnings refers to your mains-operated (corded) power tool or battery-operated (cordless) power tool.

Work Area Safety

- **Keep work area clean and well lit.** Cluttered or dark areas invite accidents.
- **Do not operate power tools in explosive atmospheres, such as in the presence of flammable liquids, gases, or dust.** Power tools create sparks which may ignite the dust or fumes.

- **Keep children and bystanders away while operating a power tool.** Distractions can cause you to lose control.

Electrical Safety

- **Power tool plugs must match the outlet. Never modify the plug in any way. Do not use any adapter plugs with earthed (grounded) power tools.** Unmodified plugs and matching outlets will reduce risk of electric shock.
- **Avoid body contact with earthed or grounded surfaces such as pipes, radiators, ranges and refrigerators.** There is an increased risk of electric shock if your body is earthed or grounded.
- **Do not expose power tools to rain or wet conditions.** Water entering a power tool will increase the risk of electric shock.
- **Do not abuse the cord. Never use the cord for carrying, pulling or unplugging the power tool. Keep cord away from heat, oil, sharp edges or moving parts.** Damaged or entangled cords increase the risk of electric shock.

* The text used in the General Power Tool Safety Warnings section of this manual is verbatim, as required, from the applicable UL/CSA/EN 62841 standard. This section contains general safety practices for many different types of power tools. Not every precaution applies to every tool, and some do not apply to this tool.

- **When operating a power tool outdoors, use an extension cord suitable for outdoor use.** Use of a cord suitable for outdoor use reduces the risk of electric shock.
- **If operating a power tool in a damp location is unavoidable, use a ground fault circuit interrupter (GFCI) protected supply.** Use of a GFCI reduces the risk of electric shock.

Personal Safety

- **Stay alert, watch what you are doing and use common sense when operating a power tool. Do not use a power tool while you are tired or under the influence of drugs, alcohol or medication.** A moment of inattention while operating power tools may result in serious personal injury.
- **Use personal protective equipment. Always wear eye protection.** Protective equipment such as dust mask, non-skid safety shoes, hard hat, or hearing protection used for appropriate conditions will reduce personal injuries.
- **Prevent unintentional starting. Ensure the switch is in the OFF-position before connecting to power source and/or battery pack, picking up or carrying the tool.** Carrying power tools with your finger on the switch or energizing power tools that have the switch ON invites accidents.
- **Remove any adjusting key or wrench before turning the power tool ON.** A wrench or a key left attached to a rotating part of the power tool may result in personal injury.
- **Do not overreach. Keep proper footing and balance at all times.** This enables better control of the power tool in unexpected situations.
- **Dress properly. Do not wear loose clothing or jewelry. Keep your hair and clothing away from moving parts.** Loose clothes, jewelry or long hair can be caught in moving parts.
- **If devices are provided for the connection of dust extraction and collection facilities, ensure these are connected and properly used.** Use of dust collection can reduce dust-related hazards.
- **Do not let familiarity gained from frequent use of tools allow you to become complacent and ignore tool safety prin-**

cles. A careless action can cause severe injury within a fraction of a second.

- **This appliance is not intended for use by persons (including children) with reduced physical, sensory or mental capabilities, or lack of experience and knowledge, unless they have been given supervision or instruction concerning use of the appliance by a person responsible for their safety.**
- **Children should be supervised to ensure that they do not play with the appliance.**

Power Tool Use and Care

- **Do not force the power tool. Use the correct power tool for your application.** The correct power tool will do the job better and safer at the rate for which it was designed.
- **Do not use the power tool if the switch does not turn it ON and OFF.** Any power tool that cannot be controlled with the switch is dangerous and must be repaired.
- **Disconnect the plug from the power source and/or remove the battery pack, if detachable, from the power tool before making any adjustments, changing accessories, or storing power tools.** Such preventive safety measures reduce the risk of starting the power tool accidentally.
- **Store idle power tools out of the reach of children and do not allow persons unfamiliar with the power tool or these instructions to operate the power tool.** Power tools are dangerous in the hands of untrained users.
- **Maintain power tools. Check for misalignment or binding of moving parts, breakage of parts and any other condition that may affect the power tool's operation. If damaged, have the power tool repaired before use.** Many accidents are caused by poorly maintained power tools.
- **Keep cutting tools sharp and clean.** Properly maintained cutting tools with sharp cutting edges are less likely to bind and are easier to control.
- **Use the power tool, accessories and tool bits etc. in accordance with these instructions, taking into account the working conditions and the work to be performed.** Use of the power tool for operations different from those intended could result in a hazardous situation.

- **Keep handles and grasping surfaces dry, clean and free from oil and grease.** Slippery handles and grasping surfaces do not allow for safe handling and control of the tool in unexpected situations.

Service

- **Have your power tool serviced by a qualified repair person using only identical replacement parts.** This will ensure that the safety of the power tool is maintained.

Specific Safety Information

⚠ WARNING

This section contains important safety information that is specific to this tool.

Read these precautions carefully before using the K-400 Drain Cleaning Machine to reduce the risk of electrical shock or other serious personal injury.

SAVE THESE INSTRUCTIONS!

Keep this manual with the machine for use by the operator. The manual can be hung on the machine.

Transportable Drain Cleaner Safety Warnings

- **Before using the tool, test the ground fault circuit interrupter (GFCI) provided with the power supply cord to insure it is operating correctly.** A properly operating GFCI reduces the risk of electrical shock.
- **Only use extension cords that are protected by an GFCI.** The GFCI on the machine power cord will not prevent electrical shock from extension cords.
- **Only grasp the rotating cable with gloves recommended by the manufacturer.** Latex or loose fitting gloves or rags can become wrapped around the cable and may result in serious personal injury.
- **Do not allow the cutter to stop turning while the cable is turning.** This can overstress the cable and may cause twisting, kinking or breaking of the cable and may result in serious personal injury.
- **One person must control both the cable and the power switch.** If the cutter stops rotating, the operator must be able to turn the tool OFF to prevent the cable from twisting, kinking and breaking.
- **Use latex or rubber gloves inside the gloves recommended by the manufacturer, goggles, face shields, protective clothing, and respirator when chemicals, bacteria or other toxic or infectious substances are suspected to be in a drain line.** Drains may contain chemicals, bacteria and other substances that may cause burns, be toxic or infectious or may result in other serious personal injury.
- **Practice good hygiene. Do not eat or smoke while handling or operating the tool. After handling or operating drain cleaning equipment, use hot, soapy water to wash hands and other body parts exposed to drain contents.** This will help reduce the risk of health hazards due to exposure to toxic or infectious material.
- **Only use the drain cleaner for the recommended drain sizes.** Using the wrong size drain cleaner can lead to twisting, kinking or breaking of the cable and may result in personal injury.
- **Never operate machine with the belt guard removed.** Fingers can be caught between the belt and pulley.
- **Keep gloved hand on the cable whenever the machine is running.** This provides better control of the cable and helps prevent twisting, kinking and breaking of the cable. Twisting, kinking or breaking cable may cause striking or crushing injuries.
- **Position machine within two feet of the drain inlet or properly support exposed cable when the distance exceeds two feet.** Greater distances can cause control problems leading to twisting, kinking or breaking of the cable. Twisting, kinking or breaking cable may cause striking or crushing injuries.
- **Do not operate the machine in REV (reverse) rotation except as described in this manual.** Operating in reverse can result in cable damage and is used to back the tool out of blockages.
- **Keep hands away from rotating drum and guide tube. Do not reach into drum unless machine is unplugged.** Hand may be caught in the moving parts.
- **Do not wear loose clothing or jewelry. Keep your hair and clothing away from moving parts.** Loose clothing, jewelry or hair can be caught in moving parts.
- **Do not operate this machine if operator or machine is standing in water.** Oper-

ating machine while in water increases the risk of electrical shock.

If you have any question concerning this RIDGID® product:

- Contact your local RIDGID distributor.
- Visit RIDGID.com to find your local RIDGID contact point.
- Contact Ridge Tool Technical Service Department at rtctechservices@emerson.com, or in the U.S. and Canada call (800) 519-3456.

Description, Specifications and Standard Equipment

Description

The RIDGID® K-400 Drain Cleaning Machine will clean drain lines from 1½" to 4" (40 to 100mm) in diameter and 100 feet (30,5m) in length depending on size of the cable. Corrosion-resistant cable drum holds 75 feet (22,5m) of ½" (12mm) diameter cable or 100 feet (30,5m) of ⅜" (10mm) diameter cable. Cable spins at 170 RPM. The K-400 is not designed to remove root blockages.

The drum is belt-driven by a ⅓ HP electric motor that has a grounded electrical system. An integral Ground Fault Circuit Interrupter (GFCI) is built into the line cord. A FOR/OFF/REV (or 1/OFF/2) switch controls drum and cable rotation and a pneumatic foot switch provides ON/OFF control of the motor.

The cable control system consists of a torque limiter to stop the drum from rotating when the tool stops rotating and the torque exceeds the set value. This helps to prevent cable damage from cable flip over in the drum. The torque limiter is designed to work with RIDGID ⅜" and ½" integral wound (IW) cable, and may not protect other cables.

The "Solid-Core" Integral Wound cable is durable and kink-resistant. The cable has a quick change coupling system for connecting or disconnecting tools.

The optional AUTOFEED® cable feed allows the cable to be advanced or retrieved at a rate of 12-15 feet per minute (3.6-4.6 m/minute).

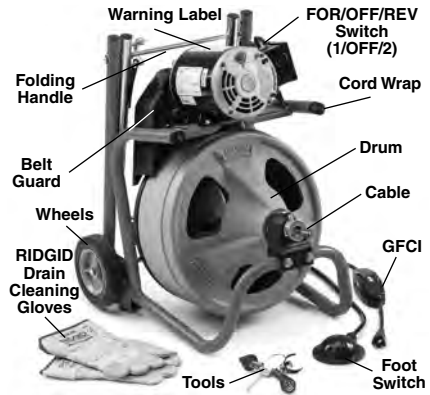


Figure 1 – K-400 Drum Machine

Specifications

Line Capacity 1½" – 3" (40mm – 75mm)
 Line with ⅜" (10mm) Cable
 3" – 4" (75mm – 100mm)
 Line with ½" (12mm) Cable
 The K-400 is not designed to remove root blockages

Drum Capacity ... 100' (30,5m) of ⅜" (10mm) Diameter Cable
 75' (22,5m) of ½" (12mm) Diameter Cable

Motor Type..... Induction
 120V~ Motor 1/3 HP, 5A, 60Hz
 220-240V~

Motor 230W, 2,5 A, 50 Hz

No Load Speed (n₀)

120V~ 170 RPM

220-240V~ 140 RPM

Control Rocker Type
 FOR/OFF/REV switch and pneumatic foot switch.
 Some units have 1/OFF/2 Rotary Switch in place of Rocker Switch.

Sound Pressure (L_{PA})* 84.8 dB(A), K=3

Sound Power (L_{VIA})* 71.3 dB(A), K=3

* Sound measurements are measured in accordance with a standardized test per Standard EN 62481-1.

- Sound emissions may vary due to your location and specific use of these tools.

- Daily exposure levels for sound need to be evaluated for each application and appropriate safety measures taken when needed. Evaluation of exposure levels should consider the time a tool is switched off and not in use. This may significantly reduce the exposure level over the total working period.

Operating Temperature.....20°F to 140°F (-6°C to 60°C)
 Weight (Machine Only)...40 lbs (18 kg)
 (with 3/8" x 75' Cable, w/o cable feed)66 lbs (30 kg)
 Dimensions:
 Length.....19.75" (500 mm)
 Width.....17.25" (440 mm)
 Height22.6" (575mm) Handle Down, 37.4" (930mm) Handle Up

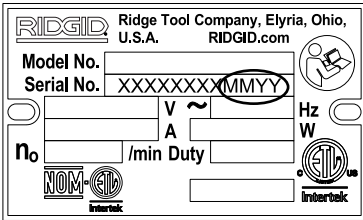


Figure 2 – Machine Serial Number

The machine serial number is located on motor table. The last 4 digits indicate the month and year of the manufacture (MMYY).

Standard Equipment

All K-400 Drain Cleaning Machines come with one pair of RIDGID Drain Cleaning Gloves.

NOTICE This machine is made to clean drains. If properly used it will not damage a drain that is in good condition and properly designed, constructed and maintained. If the drain is in poor condition, or has not been properly designed, constructed and maintained, the drain cleaning process may not be effective or could cause damage to the drain. The best way to determine the condition of a drain before cleaning is through visual inspection with a camera. Improper use of this drain cleaner can damage the drain cleaner and the drain. This machine may not clear all blockages.

Machine Assembly

⚠ WARNING
To reduce the risk of serious injury during use, follow these procedures for proper assembly.
FOR/OFF/REV switch should be OFF and machine unplugged before assembly.

Remove and discard the 5/16" x 1" cable lock set screw from the Set Collar Assembly. The cable lock set screw is provided during packaging to keep the cable from coming out of the drum during transport (*Figure 3*).



Figure 3 – Remove and discard the Cable Lock Set Screw

Installing Wheels

1. Install retaining clip into groove on one end of axle.
2. Slide one wheel onto axle with the boss away from the clip. (*See Figure 4.*)
3. Fully insert axle through hole in bracket.
4. Slide second wheel onto axle, boss first.
5. Install retaining clip into groove.

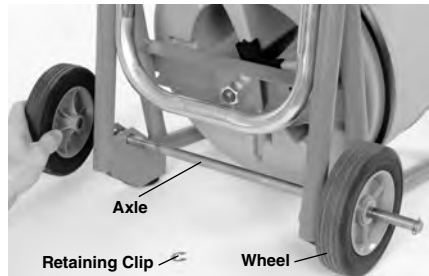


Figure 4 – Assembling Wheel

Mounting AUTOFEED® Cable Feed (Optional Equipment)

1. If needed, remove and discard cable lock set screw from the set collar. (*See Figure 3.*)

2. Pull approximately 6" (150mm) of cable from the machine.
3. Securely screw handle in place (Figure 5).
4. Remove fasteners holding front bearing mount to frame. (See Figure 5.) Replace with supplied $\frac{5}{16}$ " x 3" fasteners. Install spacer block over fasteners. Confirm mounting bracket properly placed on back of cable feed. Install bracket and cable feed over cable and securely tighten fasteners.

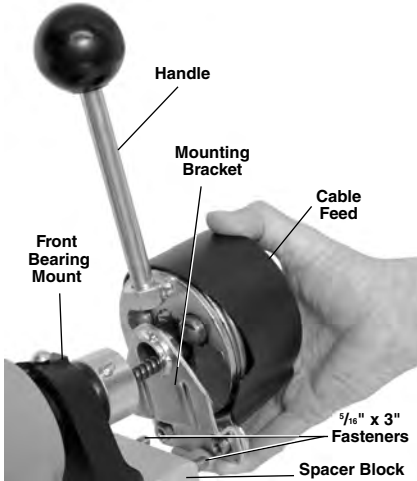


Figure 5 – Mounting Cable Feed onto the Frame

Attaching Front Guide Hose (Optional Equipment)

1. Remove the three (3) cover screws from the front of the cable feed. Keep cover in place.
2. Route the cable through the guide hose adapter. Attach the guide hose adapter to front of cable feed using existing screws, do not include flat washers. DO NOT OVERTIGHTEN.
3. Pull approximately 2' (0.6m) of cable from the drum. Feed the cable into the coupling end of the guide hose and through the hose.

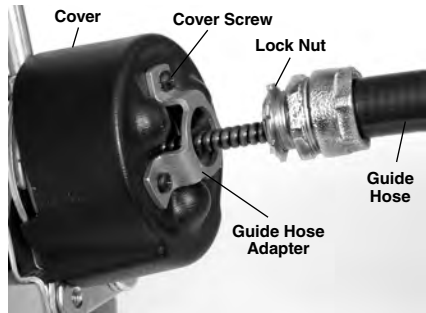


Figure 6 – Mounting Guide Hose To Cable Feed

4. Screw the guide hose coupling onto adapter. Position hose so that the natural curve of the hose follows the path to the drain. Tighten lock nut to keep hose from rotating. (See Figure 6.)

Pre-Operation Inspection

⚠ WARNING



Before each use, inspect your drain cleaning machine and correct any problems to reduce the risk of serious injury from electric shock, twisted or broken cables, chemical burns, infections and other causes and prevent drain cleaner damage.

Always wear safety glasses, and other appropriate protective equipment when inspecting your drain cleaner.

1. Inspect the RIDGID drain cleaning gloves or mitts ("gloves"). Make sure they are in good condition with no holes, tears or loose sections that could be caught in the rotating cable. It is important not to wear improper or damaged gloves. The gloves protect your hands from the rotating cable. If the gloves are not RIDGID drain cleaning gloves or are damaged or worn out, do not use machine until RIDGID drain cleaning gloves are available. See Figure 7.



Figure 7 – RIDGID Drain Cleaning Gloves – Leather, PVC

2. Make sure that the drain cleaning machine is unplugged and inspect the power cord, Ground Fault Circuit Interrupter (GFCI) and plug for damage. If the plug has been modified, is missing the grounding prong or if the cord is damaged, to avoid electrical shock, do not use the machine until the cord has been replaced by a qualified repair person.
3. Clean the drain cleaner, including handles and controls. This aids inspection and helps prevent the machine or control from slipping from your grip. Clean and maintain the machine per the maintenance instructions.
4. Inspect the drain cleaning machine for the following items:
 - Proper assembly and completeness.
 - Any broken, worn, missing, misaligned or binding parts. Rotate the drum and make sure that it turns freely.
 - Make sure the foot switch is attached to the drain cleaning machine. Do not operate the machine without the foot switch.
 - Check the belt guard to insure that it is securely fastened to the drain cleaner. Do not operate without guard in place. See *Figure 1*.
 - Presence and readability of the warning label (see *Figure 8*).
 - Inspect the cable feed. Handle should move smoothly and freely throughout range. Confirm that handle returns to neutral position when released (*Figure 14*). Confirm AUTOFEED cover is securely in place.
 - Any condition which may prevent safe and normal operation.

If any problems are found, do not use the drain cleaner until the problems have been repaired.
5. Clean any debris from the cable and cutting tools. Inspect cable for wear and damage. Cable coupling plunger pin should

move freely and fully extend to securely retain tools. Inspect cable for:

- Obvious flats worn into the outside of the cable (cable is made from round wire and the profile should be round).
- Multiple or excessively large kinks (slight kinks up to 15 degrees can be straightened)
- Uneven spacing between cable coils indicating that the cable has been deformed by stretching, kinking, or running in reverse (REV)
- Excessive corrosion from storing wet or exposure to drain chemicals.

All of these forms of wear and damage weaken the cable and make cable twisting, kinking or breaking more likely during use. Replace worn and damaged cable before using drain cleaner.

Make sure the cable is fully retracted with no more than 6" (150mm) of cable outside of the machine. This will prevent whipping of the cable at start up.

6. Inspect the tools for wear and damage. If necessary, replace prior to using the drain cleaning machine. Dull or damaged cutting tools can lead to binding, cable breakage, and slow the drain cleaning process..
 7. Make sure that the FOR/OFF/REV switch is set to the OFF position.
 8. With dry hands, plug cord into properly grounded outlet. Test the GFCI provided in the electrical cord to insure that it is operating correctly. When the test button is pushed in, the indicator light should go off. Reactivate by pushing the reset button in. If the indicator light goes on, the GFCI is functioning properly. If GFCI is not functioning properly, unplug the cord and do not use the drain cleaning machine until the GFCI has been repaired.
 9. Move the FOR/OFF/REV switch into the FOR position. Press the foot switch and note the direction of rotation of the drum. If the foot switch does not control the machine operation, do not use the machine until the foot switch has been repaired. The drum should rotate counter-clockwise when viewed from the front of the drum, and will match the drum direction shown on the warning label (*Figure 8*).
- Release the foot switch and let the drum come to a complete stop. Place the FOR/OFF/REV switch into the REV position,

and repeat above testing to confirm that the drain cleaner operates properly in reverse. If the rotation is not correct, do not use the machine until it has been repaired.

10. With the inspection complete, move the FOR/OFF/REV switch into the OFF position and, with dry hands, unplug the machine.



Figure 8 – Proper Drum Rotation (FOR Switch Position)

Machine and Work Area Set-Up

⚠ WARNING



Set up the drain cleaning machine and work area according to these procedures to reduce the risk of injury from electric shock, fire, machine tipping, twisted or broken cables, chemical burns, infections and other causes, and prevent drain cleaner damage.

Always wear safety glasses, and other appropriate protective equipment when setting up your drain cleaner.

1. Check work area for:
 - Adequate lighting.
 - Flammable liquids, vapors or dust that may ignite. If present, do not work in area until sources have been identified

and corrected. The drain cleaner is not explosion proof and can cause sparks.

- Clear, level, stable dry place for machine and operator. Do not use the machine while standing in water. If needed, remove the water from the work area.
 - Properly grounded electrical outlet of the correct voltage. Check machine serial plate for required voltage. A three-prong or GFCI outlet may not be properly grounded. If in doubt, have outlet inspected by a licensed electrician.
 - Clear path to electrical outlet that does not contain any potential sources of damage for the power cord.
 - Clear path to transport the drain cleaner to the work area.
2. Inspect the drain to be cleaned. If possible, determine the access point(s) to the drain, the size(s) and length(s) of the drain, distance to tanks or mainlines, the nature of the blockage, presence of drain cleaning chemicals or other chemicals, etc. If chemicals are present in the drain, it is important to understand the specific safety measures required to work around those chemicals. Contact the chemical manufacturer for required information.

If needed, remove fixture (water closet, etc.) to allow access to the drain. Do not feed the cable through a fixture. This could damage the drain cleaner and the fixture.

3. Determine the correct equipment for the application. *See Specifications.*

Drain cleaners for other applications can be found by consulting the RIDGID Catalog, on line at RIDGID.com

4. Make sure machine has been properly inspected.
5. If needed, place protective covers in the work area. The drain cleaning process can be messy.
6. Take the drain cleaning machine to the work area along the clear path. Before moving the machine, make sure that the handle is locked into the up position for transport (*see Figure 9*). If the machine needs to be lifted, use proper lifting techniques. Use care moving equipment up and down stairs, and be aware of possible slip hazards. Wear appropriate footwear to help prevent slips.



Figure 9 – Handle Operation

- Position the drain cleaning machine so that the K-400 cable outlet is within 2 feet (0.6m) of the drain access. Greater distances from the drain access increases the risk of the cable twisting or kinking. If the machine cannot be placed with the drum opening within 2' (0.6m) of the drain access, extend the drain access back to within 2' (0.6m) of the cable outlet with similar sized pipe and fittings. Improper cable support can allow the cable to kink and twist and can damage the cable or injure the operator. (See Figure 10.) If using front guide hose, place machine so that at least 6" (150mm) of guide hose can be placed in drain opening.



Figure 10 – Example of Extending Drain to within 2' (0.6m) of Cable Outlet

- Evaluate the work area and determine if any barriers are needed to keep by-

standers away from the drain cleaner and work area. The drain cleaning process can be messy and bystanders can distract the operator.

- Select proper tool for the conditions. If the nature of the obstruction is unknown, it is good practice to use a straight or bulb auger to explore the obstruction and retrieve a piece of the obstruction for inspection.

Once the nature of the obstruction is known, an appropriate tool can be selected for the application. A good rule of thumb is to start by running the smallest available tool through the blockage to allow the backed up water to start flowing and carry away the debris and cuttings as the drain is cleaned. Once the drain is open and flowing, other tools appropriate for the blockage can be used. Generally, the largest tool used should be no bigger than the inside diameter of the drain minus one inch.



Figure 11 – Tools Supplied With K-400

The K-400 is supplied with these tools (Figure 11).

- Cable Pin Key
- The T-202 Bulb Auger – for exploration of the clog and pulling out stoppages such as hair, etc.
- The T-205 “C” Cutter – for use in grease blockages and cleaning the walls of the pipe.
- The T-211 Spade Cutter – for use after an auger and to open up floor drains.

Proper tool selection depends on the specific circumstances of each job and is left to the users' judgement.

A variety of other cable attachments are available and are listed in the Optional Equipment section of this manual. Other information on cable attachments can be found in the RIDGID Catalog and on line at RIDGID.com.

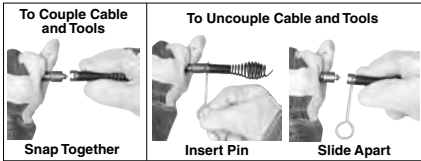


Figure 12 – Connecting/Disconnecting Tools

10. Securely install the tool to the end of the cable. The T-slot coupler allows the cutting tool to be slid onto the cable coupler. Make sure that the spring-loaded plunger in the cable coupler moves freely and retains the tool. If the pin sticks in the retracted position, the cutting tool may fall off in use. To remove cutting tool, insert the pin key into the hole in the coupling to depress the plunger and slide the coupling apart (see Figure 12).
11. Position the foot switch for easy accessibility. You must be able to hold and control the cable, control the foot switch, and reach the FOR/OFF/REV switch.
12. Confirm that the FOR/OFF/REV switch is in the OFF position.
13. Run the cord along the clear path. With dry hands plug the drain cleaner into a properly grounded outlet. Keep all connections dry and off the ground. If the power cord is not long enough, use an extension cord that:
 - Is in good condition
 - Has a three prong plug like on the Drain Cleaner.
 - Is rated for outdoor use and contains a W or W-A in the cord designation (i.e. SOW).
 - Has sufficient wire size. For extension cords up to 50' (15,2 m) long use 16 AWG (1,5 mm²) or heavier. For extension cords 50'-100' (15,2 m – 30,5 m) long use 14 AWG (2,5 mm²) or heavier.

When using an extension cord, the GFCI on the drain cleaner does not protect the extension cord. If the outlet is not GFCI protected, it is advisable to use a plug in type GFCI between the outlet and the extension cord to reduce the risk of shock if there is a fault in the extension cord.

Operating Instructions

⚠ WARNING



Always wear eye protection to protect your eyes against dirt and other foreign objects.

Only wear RIDGID drain cleaning gloves or mitts (“gloves”). Never grasp the rotating cable with anything else, including a glove or a rag. They can become wrapped around the cable, causing hand injuries. Only wear latex or rubber gloves under RIDGID drain cleaner gloves. Do not use damaged drain cleaning gloves.

Always use appropriate personal protective equipment while handling and using drain cleaning equipment. Drains may contain chemicals, bacteria and other substances that may be toxic, infectious, cause burns or other issues. Appropriate personal protective equipment always includes safety glasses and RIDGID drain cleaning gloves, and may include equipment such as latex or rubber gloves, face shields, goggles, protective clothing, respirators and steel-toed footwear.

Do not allow the cutter to stop turning while the machine is running. This can overstress the cable and may cause twisting, kinking or breaking of the cable. Twisting, kinking or breaking cable may cause striking or crushing injuries.

Keep gloved hand on the cable whenever the machine is running. This provides better control of the cable and helps prevent twisting, kinking and breaking of the cable. Twisting, kinking or breaking cable may cause striking or crushing injuries.

Position machine within two feet (0.6m) of the drain inlet or properly support exposed cable when the distance exceeds two feet. Greater distances can cause control problems leading to twisting, kinking or breaking of the cable. Twisting, kinking or breaking cable may cause striking or crushing injuries.

One person must control both the cable and the foot switch. If the cutter stops rotating, the operator must be able to turn the machine motor off to prevent twisting, kinking and breaking of the cable. Twisting, kinking or breaking cable may cause striking or crushing injuries.

Follow operating instructions to reduce the risk of injury from twisted or broken cables, cable ends whipping around, machine tipping, chemical burns, infections and other causes.

1. Make sure that the machine and work area is properly set up and the work area is free of bystanders and other distractions.
2. Pull cable out of drum and feed into drain. Push cable as far into drain as it will go. At least one foot (.3 m) of cable must be in drain so that the end of the cable will not come out of the drain and whip around when the machine is started.

Directly route the cable from the outlet of the machine to the drain opening, minimizing exposed cable and changes in direction. Do not tightly bend the cable – this can increase the risk of twisting or breaking.

3. Assume a proper operating position.
 - Be sure you can control the ON/OFF action of the foot switch and can quickly release the foot switch if needed. Do not step on foot switch yet.
 - Be sure that you have good balance, do not have to over reach, and cannot fall on the foot switch, drain cleaning machine, the drain or other hazards.
 - You must be able to place at least one hand on the cable at all times to control and support the cable.
 - You must be able to reach the FOR/OFF/REV switch.

This operating position will help to maintain control of the cable and machine. (See Figure 13.)

4. Move the FOR/OFF/REV switch to the FOR (FORWARD) position. **Do not depress the foot switch yet.** FOR/OFF/REV refers to the drum/cable rotation and not to the direction of cable movement. Do not rotate the cable in reverse except as specifically described in these instructions. Running the drain cleaner in REV (REVERSE) can damage the cable.



Figure 13 – In Operating Position, Manually Feeding Cable

Operation

The K-400 Drain Cleaning Machine is available in two different feed configurations, either manual feed or AUTOFEED. A K-400 supplied with the AUTOFEED can either feed the cable with the AUTOFEED or by manually pulling the cable from the drum and feeding it into the drain. With the AUTOFEED you can switch back and forth between operating methods as needed. If an AUTOFEED is not available, the K-400 can only be used manually.

Feeding the Cable into the Drain

Manual Operation

1. Confirm that at least one foot (0,3 m) of cable is in the drain.
2. Grasp the exposed cable with both gloved hands equally spaced and pull 6"-12" (150mm - 300mm) of cable out of the drum so that there is a slight bow in the cable. Gloved hands must be on the cable to control and support the cable. Improper cable support can allow the cable to kink or twist and can damage the cable or injure the operator. Make sure that the cable outlet of the drain cleaner is within 2' (0.6m) of the drain opening (Figure 13.).
3. Depress the foot switch to start the machine. The person controlling the cable must also control the foot switch. Do not operate the drain cleaner with one person controlling the cable and another person controlling the foot switch. This can lead to twisting, kinking and breaking of the cable.
4. Feed the rotating cable into the drain. The rotating cable will work its way into

the drain as you push on the cable with gloved hands. Do not allow the cable to build up outside the drain, bow or curve. This can allow the cable to twist, kink or break.

- When the cable has been fed into the drain opening, pull 6"-12" (0.15 - 0.3m) more cable from the drum and continue feeding the rotating cable into the drain.

AUTOFEED Cable Feed Operation

- Confirm that at least one foot (0.3m) of cable is in the drain.
- Grasp near the center of the exposed length of cable with a gloved hand. Gloved hand must be on the cable to control and support the cable. Improper cable support can allow the cable to kink or twist and can damage the cable or injure the operator. Make sure that the cable outlet of the drain cleaner is within 2' (0.6m) of the drain opening. Place the other hand on the cable feed handle. Handle should be in neutral (Vertical) position (see *Figure 14*).

See "Using Machine with a Front Guide Hose" if using a guide hose.

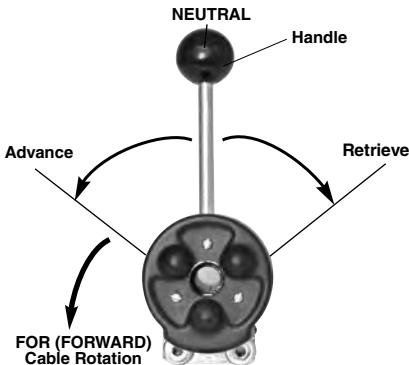


Figure 14 – AUTOFEED Cable Feed Directions (Viewed From Front of Machine)

- Depress the foot switch to start the machine. The person controlling the cable must also control the foot switch. Do not operate the drain cleaner with one person controlling the cable and another person controlling the foot switch. This can lead to twisting, kinking and breaking of the cable.
- With the cable rotating in the FOR (FORWARD) direction, move the AUTOFEED control handle to the ADVANCE position until it engages and advances the cable. ADVANCE (or RETRIEVE) can be al-

most 90° from the NEUTRAL position (*Figure 14*). The rotating cable will work into the drain as you control the cable with your gloved hand. Do not allow the cable to build up outside the drain, bow or curve. This can allow the cable to twist, kink or break.



Figure 15 – Operating K-400 with AUTOFEED

Passing Through Traps or Other Transitions

If it is difficult to get the cable through a trap or other fitting, the following methods or combinations of methods can be used.

- Sharp thrusts of the cable, both with and without the cable rotating, can help the cable through a trap.
- In some cases with the switch in the OFF position, rotating the drum by hand can change the orientation of the cutter to allow it to more easily negotiate the fitting.
- Run the drain cleaner in REV rotation for several seconds while pushing on the cable. Only do this long enough to get the cable started through the trap. Running the cable in reverse can damage the cable.
- Attach a single section (only one section) of C-9 cable as a flexible leader between the end of the cable and the tool.

If these options do not work, consider using a smaller diameter or more flexible cable, or a different drain cleaner.

Cleaning the Drain

As you feed the cable into the drain, you may see the cable slow down or build up outside the drain. Always keep your hands on the cable. You may feel the cable start to wind or load up (this may feel like the cable is starting to twist or squirm). This may be a transition in the drain (trap, elbow, etc.), build up in the

drain (grease, etc.) or the actual blockage. Feed the cable slowly and carefully. Do not let cable build up outside the drain. This can cause the cable to twist, kink or break.

Pay attention to the amount of cable that has been fed into the drain. Feeding cable into a larger drain, septic tank or similar transition may cause the cable to kink or knot and prevent removal from the drain. Minimize the amount of cable fed into the transition to prevent problems. Each wrap of the cable in the drum is approximately 3.5' (1.1 m).

Working the Blockage

If the end of the cable stops turning, it is no longer cleaning the drain. If the end of the cable becomes lodged in the blockage and power is maintained to the drain cleaner, the cable will start to wind up (this may feel like the cable is starting to twist or squirm). Having a hand on the cable allows you to feel this wind up and control the cable.

If the cable end stops turning or if the cable starts to wind up, immediately pull the cable back from the obstruction.

- Manual Operation – Pull back on the cable to free the cable end from the blockage.
- AUTOFEED cable feed operation – Move the handle to the retrieve position (*Figure 14*) to free the cable end from the blockage.

Do not keep the cable rotating if the cable is stuck in a blockage. If the cable end stops turning and the drum keeps rotating, the cable can twist, kink or break.

Once the cable end is free of the blockage and turning again, you can slowly feed the cable end back into the blockage. Do not try to force the cable end through the blockage. Let the spinning end “dwell” in the blockage to completely break it up. Manual operation may give the best control in these instances. Work the tool in this manner until you have moved completely past the blockage (or blockages) and the drain is flowing.

While working the blockage, the tool and cable may become clogged with debris and cuttings from the blockage. This can prevent further progress. The cable and tool need to be retrieved from the drain and the debris removed. See section on “Retrieving the Cable.”

Handling a Stuck Tool

If the tool stops turning and the cable cannot be pulled back from the blockage, release

the foot switch while firmly holding the cable. If using cable feed, release the handle to come back to the neutral (straight up) position. Do not remove hands from cable or cable may kink, twist and break. The motor will stop and the cable and drum may turn backwards until the energy stored in the cable is relieved. Do not remove hands from cable until the tension is released. Place FOR/OFF/REV switch in OFF position.

The torque limiter helps to prevent cable damage from cable flip over in the drum by stopping drum and cable rotation when the torque exceeds the setting. The motor will continue to rotate as long as the foot switch is pressed, but the drum and cable will stop rotating when the torque limiter setting is exceeded. The torque limiter cannot prevent all cable damage in the drum, and cannot prevent cable flip over outside the drum. If the drum stops turning, the cable and tool also are not turning.

Freeing a Stuck Tool

If the tool is stuck in the blockage, with the FOR/OFF/REV switch in the OFF position and the foot switch released, try pulling the cable loose from the blockage. If the tool will not come free from the blockage, place the FOR/OFF/REV switch in the REV position. Grasp the cable with both gloved hands, press the foot switch for several seconds and pull on the cable until it is free of the blockage. Do not operate the machine in the REV position any longer than required to free the cutting tool from the blockage or cable damage can occur. Place the FOR/OFF/REV switch in the FOR position and continue cleaning the drain.

Retrieving the Cable

1. Once the drain is open, if possible start a flow of water down the drain to flush the debris out of the line and help clean the cable as it is retrieved. This can be done by running a hose down the drain opening, turning on a faucet in the system or other methods. Pay attention to the water level, as the drain could plug again.
2. The FOR/OFF/REV switch should be in the FOR position – do not retrieve the cable with the switch in the REV position, this can damage the cable. As with feeding the cable into the drain, cables can be caught while being retrieved.
 - Manual Operation – With both gloved hands equally spaced on the exposed cable for control, pull 6"-12" (0.15 - 0.3m)

lengths of cable from the drain at a time and feed it into the drum. Continue retrieving cable until the cable end is just inside the drain opening.

- AUTOFEED Cable Feed Operation – With one hand near the center of the exposed length of cable, move the handle to the RETRIEVE position to retrieve the cable. The rotating cable will work its way out of the drain and back into the drum. Continue retrieving cable until the cable end is just inside the drain opening. Release the handle to come back to the neutral position.
3. Release the foot switch, allowing the drum to come to a complete stop. Do not pull the end of the cable from the drain while the cable is rotating. The cable can whip around and cause serious injury. Pay attention to the cable during retrieval as the cable end can still become stuck.
 4. Place the FOR/OFF/REV in the OFF position. Pull the remaining cable from the drain with gloved hands and feed into the drain cleaner. If needed, change the tool and continue cleaning following the above process. Several passes through a line are recommended for complete cleaning.

Using Machine with a Front Guide Hose

The front guide hose is an optional accessory to help protect fixtures and contain the liquid and debris thrown off of the cable. It can only be used with an AUTOFEED cable feed. Using the Front Guide hose can decrease feedback from the cable, making it harder to tell what conditions the cable is encountering. This may increase the possibility of damage to the cable. Using the front guide hose makes it more difficult to switch back and forth between manual and cable feed operation.

Using a machine with the front guide hose is similar to using a machine with the AUTOFEED cable feed. Follow instructions with the following exceptions:

- When setting up the machine, insert the guide hose at least 6" into the drain.
- Instead of holding the cable, hold the guide hose. See *Figure 16*. Always control the guide hose and properly support the cable to prevent the cable from twisting, kinking or breaking.



Figure 16 – Using Machine with Guide Hose

When using a front guide hose, pay attention how the guide hose feels in your hand and watch the drum rotation. Because the guide hose is over the cable, there is less sensitivity to the loading of the cable, and it is harder to tell if the tool is rotating or not. If the tool is not rotating, the drain is not being cleaned.

If the tool continues to get hung up in the blockage, stop using the AUTOFEED cable feed (leave the handle in the neutral position) and work the cable manually. To do this, the cable must be retrieved from the drain and the guide hose removed to allow proper positioning of the machine to the drain and access to the cable. Do not try to work the cable by hand with the front guide hose in place.

When retrieving the cable, be sure to stop the cable before the tool is pulled into the end of the guide hose to prevent damage.

Maintenance Instructions

⚠ WARNING

FOR/OFF/REV switch should be OFF and machine unplugged before performing any maintenance.

Always wear safety glasses and other appropriate protective equipment when performing any maintenance.

Cleaning

The machine should be cleaned as needed with hot, soapy water and/or disinfectants. Do not allow water to enter motor or other electrical components. Make sure unit is completely dry before plugging in and using.

Cables

Cables should be thoroughly flushed with water after every use to prevent damaging effects of sediment and drain cleaning compounds. Flush cable with water and drain debris from drum by tipping machine forward after every use to remove sediment, etc. which can corrode cable.

Cable connector plunger pin can be lubricated with light machine oil.

AUTOFEED Cable Feed

After each use, hose out AUTOFEED cable feed assembly with water and lubricate with lightweight machine oil.

Lubrication

In general, the drain cleaner will not require lubrication. If the drum is removed or changed, grease the bearings with good general purpose grease.

Front Guide Hose

After use, flush the guide hose with water and drain.

Belt Removal/Installation

1. Loosen belt guard screws (near motor) and slide guard off screws. Do not operate drain cleaner with belt guard removed.
2. Hold the belt tensioner to the side and remove the belt from the drum and pulley. (See Figure 17) Slide the belt to the front of the machine near the front bearing mount.
3. Remove the bolts and nuts holding the front bearing mount and AUTOFEED cable feed (see Figure 5) in place. Pull the drum and front bearing mount forward enough to slide the belt off the machine, between the front bearing mount and the frame.
4. Reverse procedure to replace belt. If changing belt, adjust torque limiter as described below.

Torque Limiter Adjustment

The K-400 Drain Cleaner is equipped with a torque limiter to help prevent cable damage from flip over in the drum.

The torque limiter causes the belt to slip when the torque exceeds a set value. The torque limiter is set at the factory, and in most cases will never need to be adjusted. If excessive belt

slippage is experienced during use, this procedure can be used to check and adjust the torque limiter setting. Additionally, if the belt is changed, the torque limiter will need to be checked and adjusted.

NOTICE Do not adjust the torque limiter outside of the specified range. Setting the torque limiter outside of the specified range could result in damage to the machine and cable.

1. Loosen belt guard screws (near motor) and slide guard off screws.
2. Check the gap between the torque limiter spring coils near the middle of the spring. (See Figure 17.) This can be measured with a set of feeler gauges.

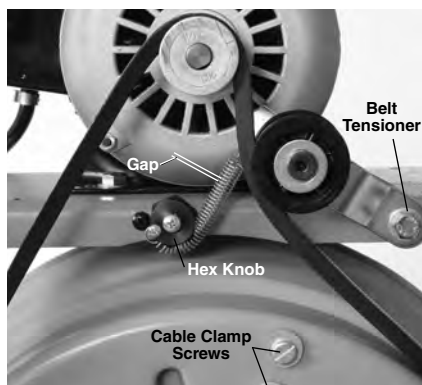


Figure 17 – Torque Limiter Adjustment. (Shown With Belt Guard Removed)

3. The torque limiter is properly set if the gap is 0.048" (1.22 mm) to 0.060" (1.52 mm), about the thickness of a U.S. dime. If the gap is within this range, the torque limiter is properly set and no adjustment is necessary.
4. If torque limiter is outside of acceptable range, the torque limiter must be adjusted.
5. Loosen screw located in the center of hex knob approximately 3 turns.
6. Pull the hex knob out slightly. If the gap needs to be increased, rotate the knob clockwise to the next flat of the hex knob. If the gap needs to be decreased, rotate counter-clockwise to the next flat of the hex knob.
7. Repeat steps 2-5 until the spring coil gap is correct.
8. Tighten the hex knob screw.
9. Replace the guard. Do not operate drain cleaner with belt guard removed.

Replacing Cable

To Remove Cable From Drum

1. Pull out excess cable from drum allowing access to cable bracket.
2. Loosen screws on back of drum that fasten cable clamps (*Figure 17*) and back plate against back wall of drum.
3. Pull end of old cable from drum and discard.

To Install Replacement Cable

1. To make cable installation easier, completely uncoil new cable before proceeding. Use caution when removing the cable from the package. The cable is under tension and could strike the user. Adding a 30 degree bend about 4" (100mm) from the drum end of cable will facilitate it entering the drum.
2. Insert about 24" (0.8m) of cable through the guide tube into the drum. Cable should coil into the drum in a counter-clockwise direction (*Figure 18*).



Figure 18 – Coil Cable Into Drum As Shown

3. Reach inside the drum and maneuver end of cable so that it is between the cable clamp and back plate. The end of the cable should extend at least 3" (75mm) past the clamp.
4. Retighten the screws to clamp the cable against the back plate and back wall of the drum.
5. Feed cable into drum.

Optional Equipment

⚠ WARNING

To reduce the risk of serious injury, only use optional equipment specifically designed and recommended for use with the RIDGID K-400 Drain Cleaning Machine, such as those listed.

IW (Integral Wound) Solid Core Cables

	Catalog No.	Model No.	Description	Weight	
				lb.	kg
1/4" 10mm	87577	C-311W	50' (15m) IW Cable	18	8.2
	87582	C-321W	75' (23m) IW Cable	26	11.8
	87587 91037	C-331W	100' (30m) IW Cable Repair End for 1/2" IW Cable	34 0.5	15.4 0.2
1/2" 12mm	87592	C-441W	50' (15m) IW Cable	27	12.2
	87597	C-451W	75' (23m) IW Cable	39	17.7
	91042	—	Repair End for 1/2" IW Cable	0.6	0.3

	Catalog No.	Model No.	Description	Weight	
				lb.	kg
	41937	—	RIDGID Drain Cleaning Gloves, Leather	1/2	0.2
	70032	—	RIDGID Drain Cleaning Gloves, PVC		
	59230	A-13	Pin Key For 1/4" Cable	—	—
	26773	—	K-400 AUTOFEED Assembly	3.14	1.42
	26778	—	Guide Hose	2	1

Tools and Replacement Blades – Fits 3/8" and 1/2" Cables Fits C-311W, C-321W, C-331W, C-441W and C-451W

	Catalog No.	Model No.	Description	Replacement Blade(s)
	62995	T-202	Bulb Auger, 1 1/4" O.D.	—
	63065	T-217	Drop Head, 4' Long	—
	63005	T-205	"C" Cutter 1 1/4"	97835
	63010	T-206	Funnel Auger, 3' Long	—
	63035	T-211	Spade Cutter, 1 1/4"	97825
	49002	T-260	Tool Set (3/8" - K-400) – T-202 Bulb Auger – T-205 "C" Cutter – T-211 Spade Cutter – A-13 Pin Key	—

For a complete listing of RIDGID optional equipment available for this tool, see the RIDGID Catalog online at RIDGID.com or call Ridge Tool Technical Service Department (800) 519-3456.

Machine Storage

⚠ WARNING The drain cleaner and cables must be kept dry and indoors or well covered if kept outdoors. Store the machine in a locked area that is out of reach of children and people unfamiliar with drain cleaners. This machine can cause serious injury in the hands of untrained users.

Service and Repair

⚠ WARNING

Improper service or repair can make attachments unsafe to operate.

The "Maintenance Instructions" will take care of most of the service needs of this machine. Any problems not addressed by this section

should only be handled by an authorized RIDGID service technician.

Tool should be taken to a RIDGID Authorized Independent Service Center or returned to the factory. Only use RIDGID service parts.

For information on your nearest RIDGID Authorized Independent Service Center or any service or repair questions:

- Contact your local RIDGID distributor.
- Visit RIDGID.com to find your local RIDGID contact point.
- Contact Ridge Tool Technical Service Department at rtctechservices@emerson.com, or in the U.S. and Canada call (800) 519-3456.

Disposal

Parts of the K-400 Drain Cleaning Machine contain valuable materials and can be recycled. There are companies that specialize in recycling that may be found locally. Dispose of the components and any waste oil in compliance with all applicable regulations. Contact your local waste management authority for more information.



For EC Countries: Do not dispose of electrical equipment with household waste!

According to the European Guideline 2012/19/EU for Waste Electrical and Electronic Equipment and its implementation into national legislation, electrical equipment that is no longer usable must be collected separately and disposed of in an environmentally correct manner.

Troubleshooting

PROBLEM	POSSIBLE REASON	SOLUTION
Cable kinking or breaking.	Cable is being forced.	Do Not Force Cable! Let the cutter do the work.
	Cable used in incorrect pipe diameter.	Use correct cable for pipe.
	Motor switched to reverse.	Use reverse only if cable gets caught in pipe.
	Cable exposed to acid.	Clean and oil cables routinely.
	Cable worn out.	If cable is worn, replace it.
	Cable not properly supported.	Support cable properly, <i>see instructions</i> .
	Torque limiter not properly adjusted.	Properly adjust torque limiter.
Drum stops while foot switch is depressed. Restarts when foot switch is re-depressed.	Hole in foot switch or hose.	Replace damaged component.
	Hole in air switch.	If no problem found with pedal or hose, replace air switch.
Drum turns in one direction but not the other.	Faulty FOR/OFF/REV switch.	Replace switch.
Ground Fault Circuit Interrupter trips when machine is plugged in or when foot pedal is depressed.	Damaged power cord.	Replace cord set.
	Short circuit in motor.	Take motor to your nearest Service Center.
	Faulty Ground Fault Circuit Interrupter.	Replace cord set that includes a Ground Fault Circuit Interrupter.
	Moisture in motor, switch box or on plug.	Take drain cleaner to your nearest Service Center.
Motor turning but drum is not.	Torque limiter slipping because improperly adjusted.	Properly adjust torque limiter.
	Torque limiter slipping because cable is being forced.	Do not force cable.
	Belt not on drum or pulley.	Re-install belt.
AUTOFEED cable feed doesn't work.	Cable feed full of debris.	Clean cable feed.
	Cable feed needs lubrication.	Lubricate Cable feed.
Machine wobbles or moves while cleaning drain.	Cable not evenly distributed.	Pull all cable out and feed again, evenly distribute.
	Ground not level.	Place on level stable surface.

