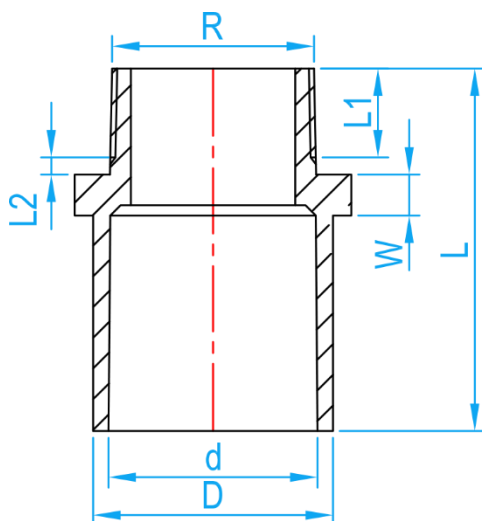
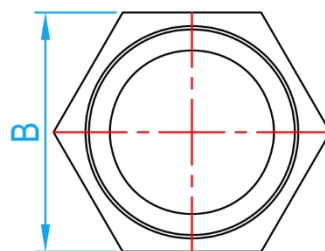


ESLON TS/AW VALVE SOCKET

COMPLY WITH JIS K 6743



CROSS SECTIONAL VIEW



TOP VIEW

DIMENSIONS

SKU	DN	D (mm)	d (mm)	Threaded Section						L2 (mm)	W (mm)	L (mm)	B (mm)	WEIGHT (Kg)	PCS/CTN
				Size (inch)	D1 (mm)	No. of Screw Threads (per 25.4mm)	a (mm)	Tolerance for (a)	L1 (mm)						
AWVS013	13	24	18.40±0.20	R ½"	20.955	14	8.16	±1.81	15	3.5	6	50	24	0.008	1000
AWVS015	15	29	22.40±0.20	R ½"	20.955	14	8.16	±1.81	15	3.5	6	54	29	0.023	360
AWVS020	20	33	26.45±0.20	R ¾"	26.441	14	9.53	±1.81	17	3.5	8	64	33	0.033	220
AWVS025	25	40	32.55±0.25	R 1"	33.249	11	10.39	±2.31	19	4.0	8	71	40	0.053	240
AWVS035	35	46	38.60±0.25	R 1 ¼"	41.910	11	12.70	±2.31	22	4.0	10	80	46	0.070	160
AWVS042	42	57	48.70±0.30	R 1 ½"	47.803	11	12.70	±2.31	22	5.0	10	92	57	0.109	100
AWVS050	50	70	60.80±0.30	R 2"	59.614	11	15.88	±2.31	26	5.0	12	106	70	0.098	60
AWVS065	65	87	76.60±0.30	R 2 ½"	75.814	11	17.50	±6.9	30	6.0	14	119	91	0.268	60
AWVS080	80	102	89.60±0.30	R 3"	87.884	11	20.60	±6.9	34	6.0	16	128	108	0.414	36
AWVS100	100	130	114.70±0.30	R 4"	113.030	11	25.40	±6.9	40	7.0	18	157	135	0.766	18

- Notes:**
1. The threaded section conforms to the JIS B 0203 (pipe taper thread) taper thread.
 2. The tolerance for L is +5 and -2mm.
 3. The nut section is octagonal for 30 mm or more.
 4. The tolerance for D depends on the common dimensions of socket.