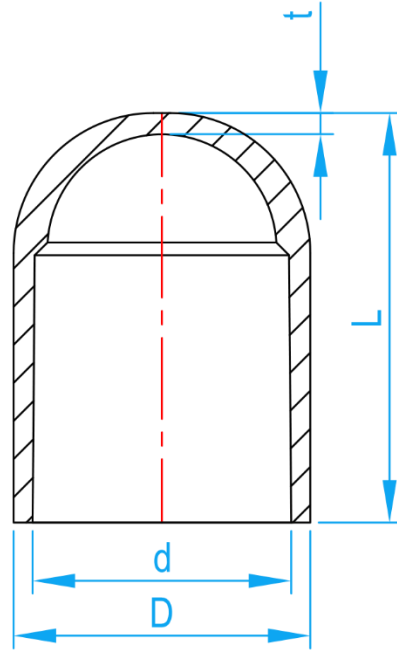
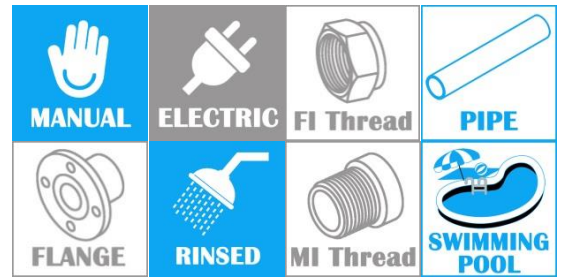


ESLON TS/AW END CAP

COMPLY WITH JIS K 6743



CROSS SECTIONAL VIEW

DIMENSIONS

SKU	DN	D (mm)	d (mm)	t (mm)	L (mm)	WEIGHT (Kg)	PCS/CTN
AWC013	13	24	18.40±0.20	3.0	36.5	0.011	740
AWC015	15	29	22.40±0.20	3.5	43.0	0.017	480
AWC020	20	33	26.45±0.20	3.5	50.0	0.025	320
AWC025	25	40	32.55±0.25	4.0	58.5	0.039	320
AWC035	35	46	38.60±0.25	4.0	65.5	0.053	220
AWC042	42	57	48.70±0.30	4.5	82.0	0.091	120
AWC050	50	70	60.80±0.30	5.0	96.5	0.146	70
AWC080	80	102	76.60±0.30	8.0	105.0	0.442	36
AWC100	100	130	89.60±0.30	10.0	138.0	0.775	18
AWC150	150	186	114.70±0.30	13.0	205.0	1.745	6

- Notes:**
1. The tolerance for L is +5 and 0 mm.
 2. R is 1~ 5mm.
 3. The tolerance for D and t depends on the common dimensions of socket.